

MYL2 rabbit pAb

Cat No.:ES8862

For research use only

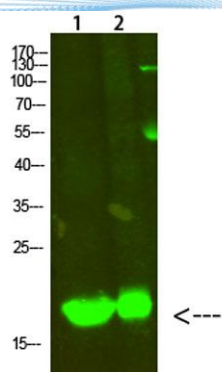
Overview

Product Name	MYL2 rabbit pAb
Host species	Rabbit
Applications	WB;ELISA;IHC
Species Cross-Reactivity	Human;Mouse;Rat
Recommended dilutions	WB 1:500-2000;IHC-p 1:50-300; ELISA 2000-20000
Immunogen	Synthesized peptide derived from human MYL2. at AA range: 91-140
Specificity	MYL2 Polyclonal Antibody detects endogenous levels of MYL2
Formulation	Liquid in PBS containing 50% glycerol, 0.5% BSA and 0.02% sodium azide.
Storage	Store at -20°C. Avoid repeated freeze-thaw cycles.
Protein Name	MYL2
Gene Name	MYL2
Cellular localization	Cytoplasm, myofibril, sarcomere, A band .
Purification	The antibody was affinity-purified from rabbit antiserum by affinity-chromatography using epitope-specific immunogen.
Clonality	Polyclonal
Concentration	1 mg/ml
Observed band	18kD
Human Gene ID	4633
Human Swiss-Prot Number	P10916
Alternative Names	Myosin regulatory light chain 2, ventricular/cardiac muscle isoform (MLC-2) (MLC-2v)
Background	Thus gene encodes the regulatory light chain associated with cardiac myosin beta (or slow) heavy chain. Ca ⁺ triggers the phosphorylation of regulatory light chain that in turn triggers contraction. Mutations in this gene are associated with mid-left ventricular chamber type hypertrophic cardiomyopathy. [provided by RefSeq, Jul 2008],



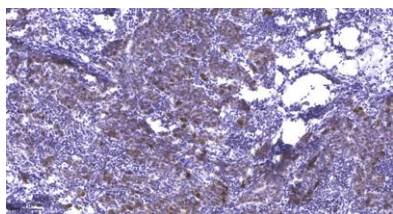


ELK Biotechnology



Western Blot analysis of 1,mouse-heart 2,Hela cells using primary antibody diluted at 1:500(4°C overnight).

Secondary antibody:Goat Anti-rabbit IgG IRDye 800(diluted at 1:5000, 25°C, 1 hour)



Immunohistochemical analysis of paraffin-embedded human Breast cancer. 1, Antibody was diluted at 1:200(4°C overnight). 2, Tris-EDTA,pH9.0 was used for antigen retrieval. 3,Secondary antibody was diluted at 1:200(room temperature, 45min).



+86-27-59760950

ELKbio@ELKbiotech.com

www.elkbiotech.com

23-2, No.388 Gaoxin 2nd Road,Wuhan East Lake Hi-tech Development Zone, Hubei , P.R.C