



PARP-1 (Acetyl-K521) rabbit pAb

Cat No.:ES8828

For research use only

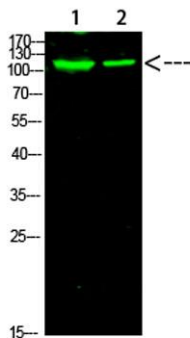
Overview

Product Name	PARP-1 (Acetyl-K521) rabbit pAb
Host species	Rabbit
Applications	WB;ELISA
Species Cross-Reactivity	Human:K521;Mouse:K520;Rat:K521
Recommended dilutions	wb dilution 1:1000
Immunogen	Synthesized Acetyl peptide derived from human PARP-1. at AA range: K521
Specificity	This antibody detects endogenous levels of PARP-1 at Human:K521;Mouse:K520;Rat:K521, It doesn't react with total protein.
Formulation	Liquid in PBS containing 50% glycerol, 0.5% BSA and 0.02% sodium azide.
Storage	Store at -20°C. Avoid repeated freeze-thaw cycles.
Protein Name	PARP-1
Gene Name	PARP1 ADPRT PPOL
Cellular localization	Nucleus . Nucleus, nucleolus . Chromosome . Localizes to sites of DNA damage. .
Purification	The antibody was affinity-purified from rabbit antiserum by affinity-chromatography using epitope-specific immunogen.
Clonality	Polyclonal
Concentration	1 mg/ml
Observed band	
Human Gene ID	142
Human Swiss-Prot Number	P09874
Alternative Names	Poly [ADP-ribose] polymerase 1 (PARP-1) (EC 2.4.2.30) (ADP-ribosyltransferase diphtheria toxin-like 1) (ARTD1) (NAD(+) ADP-ribosyltransferase 1) (ADPRT 1) (Poly[ADP-ribose] synthase 1)
Background	This gene encodes a chromatin-associated enzyme, poly(ADP-ribose)transferase, which modifies various nuclear proteins by poly(ADP-ribose)ation. The modification is dependent on DNA and is involved in

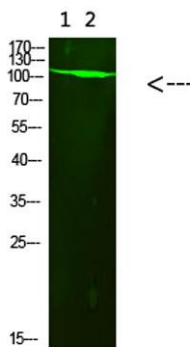




the regulation of various important cellular processes such as differentiation, proliferation, and tumor transformation and also in the regulation of the molecular events involved in the recovery of cell from DNA damage. In addition, this enzyme may be the site of mutation in Fanconi anemia, and may participate in the pathophysiology of type I diabetes. [provided by RefSeq, Jul 2008],



Western Blot analysis of 1,mouse-heart 2,mouse-brain cells using primary antibody diluted at 1:1000(4°C overnight). Secondary antibody:Goat Anti-rabbit IgG IRDye 800(diluted at 1:5000, 25°C, 1 hour)



Western Blot analysis of 1,293t 2,mouse-brain cells using primary antibody diluted at 1:1000(4°C overnight). Secondary antibody:Goat Anti-rabbit IgG IRDye 800(diluted at 1:5000, 25°C, 1 hour)

