

Granzyme M rabbit pAb

Cat No.:ES8807

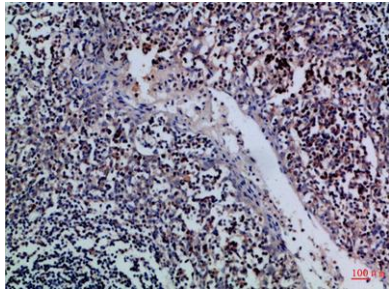
For research use only

Overview

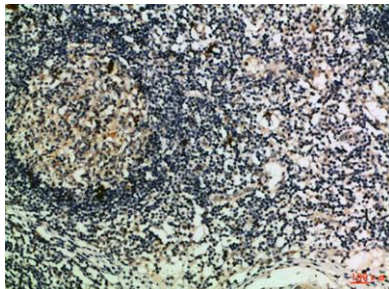
Product Name	Granzyme M rabbit pAb
Host species	Rabbit
Applications	IHC;IF;ELISA
Species Cross-Reactivity	Human;Rat;Mouse;
Recommended dilutions	IHC-p 1:50-200, ELISA 1:10000-20000
Immunogen	Synthetic peptide from human protein at AA range: 207-256
Specificity	The antibody detects endogenous Granzyme M
Formulation	Liquid in PBS containing 50% glycerol, 0.5% BSA and 0.02% sodium azide.
Storage	Store at -20°C. Avoid repeated freeze-thaw cycles.
Protein Name	Granzyme M (EC 3.4.21.-) (Met-1 serine protease) (Hu-Met-1) (Met-ase) (Natural killer cell granular protease)
Gene Name	GZMM MET1
Cellular localization	Secreted. Cytoplasmic granule. Granules of large granular lymphocytes.
Purification	The antibody was affinity-purified from rabbit antiserum by affinity-chromatography using epitope-specific immunogen.
Clonality	Polyclonal
Concentration	1 mg/ml
Observed band	
Human Gene ID	3004
Human Swiss-Prot Number	P51124
Alternative Names	Granzyme M (EC 3.4.21.-;Met-1 serine protease;Hu-Met-1;Met-ase;Natural killer cell granular protease)
Background	Human natural killer (NK) cells and activated lymphocytes express and store a distinct subset of neutral serine proteases together with proteoglycans and other immune effector molecules in large cytoplasmic granules. These serine

proteases are collectively termed granzymes and include 4 distinct gene products: granzyme A, granzyme B, granzyme H, and the protein encoded by this gene, granzyme M. Two transcript variants encoding different isoforms have been found for this gene. [provided by RefSeq, Apr 2012],

Immunohistochemical analysis of paraffin-embedded Human-tonsil, antibody was diluted at 1:100



Immunohistochemical analysis of paraffin-embedded Human-lymph, antibody was diluted at 1:100



Immunohistochemical analysis of paraffin-embedded Human-lymph, antibody was diluted at 1:100

