

CD300a rabbit pAb

Cat No.:ES8794

For research use only

Overview

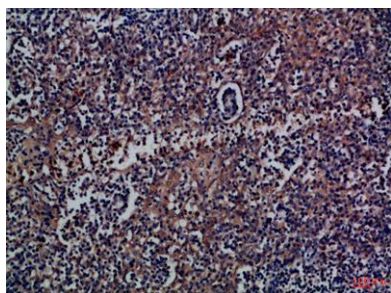
Product Name	CD300a rabbit pAb
Host species	Rabbit
Applications	IHC;IF;ELISA
Species	Human;Rat;Mouse;
Cross-Reactivity	
Recommended dilutions	IHC-p 1:50-200, ELISA 1:10000-20000
Immunogen	Synthetic peptide from human protein at AA range: 141-190
Specificity	The antibody detects endogenous CD300a
Formulation	Liquid in PBS containing 50% glycerol, 0.5% BSA and 0.02% sodium azide.
Storage	Store at -20°C. Avoid repeated freeze-thaw cycles.
Protein Name	CMRF35-like molecule 8 (CLM-8) (CD300 antigen-like family member A) (CMRF-35-H9) (CMRF35-H9) (CMRF35-H) (IRC1/IRC2) (Immunoglobulin superfamily member 12) (IgSF12) (Inhibitory receptor protein 60) (IR
Gene Name	CD300A CMRF35H IGSF12 HSPC083
Cellular localization	Cell membrane ; Single-pass type I membrane protein .
Purification	The antibody was affinity-purified from rabbit antiserum by affinity-chromatography using epitope-specific immunogen.
Clonality	Polyclonal
Concentration	1 mg/ml
Observed band	
Human Gene ID	11314
Human	Q9UGN4
Swiss-Prot	
Number	
Alternative Names	CMRF35-like molecule 8 (CLM-8;CD300 antigen-like family member A;CMRF-35-H9;CMRF35-H9;CMRF35-H;IRC1/IRC2;Immunoglobulin superfamily member 12;IgSF12;Inhibitory receptor protein 60;IRp60;NK inhibitory receptor;CD antigen CD300a)



Background

CD300a molecule(CD300A) Homo sapiens This gene encodes a member of the CD300 glycoprotein family of cell surface proteins found on leukocytes involved in immune response signaling pathways. This gene is located on chromosome 17 in a cluster with all but one of the other family members. Multiple transcript variants encoding different isoforms have been found for this gene. [provided by RefSeq, Feb 2012],

Immunohistochemical analysis of paraffin-embedded Human-tonsil, antibody was diluted at 1:100



Immunohistochemical analysis of paraffin-embedded Human-tonsil, antibody was diluted at 1:100

