

BMPR-IB rabbit pAb

Cat No.:ES8793

For research use only

Overview

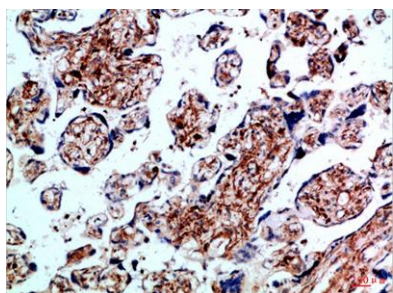
Product Name	BMPR-IB rabbit pAb
Host species	Rabbit
Applications	IHC;IF;ELISA
Species Cross-Reactivity	Human;Mouse
Recommended dilutions	IHC-p 1:50-200, ELISA 1:10000-20000
Immunogen	Synthetic peptide from human protein at AA range: 21-70
Specificity	The antibody detects endogenous BMPR-IB
Formulation	Liquid in PBS containing 50% glycerol, 0.5% BSA and 0.02% sodium azide.
Storage	Store at -20°C. Avoid repeated freeze-thaw cycles.
Protein Name	Bone morphogenetic protein receptor type-1B (BMP type-1B receptor) (BMPR-1B) (EC 2.7.11.30) (CD antigen CDw293)
Gene Name	BMPR1B
Cellular localization	Cell membrane ; Single-pass type I membrane protein .
Purification	The antibody was affinity-purified from rabbit antiserum by affinity-chromatography using epitope-specific immunogen.
Clonality	Polyclonal
Concentration	1 mg/ml
Observed band	
Human Gene ID	658
Human Swiss-Prot Number	O00238
Alternative Names	Bone morphogenetic protein receptor type-1B (BMP type-1B receptor;BMPR-1B;EC 2.7.11.30;CD antigen CDw293)
Background	This gene encodes a member of the bone morphogenetic protein (BMP) receptor family of transmembrane serine/threonine kinases. The ligands of this receptor are BMPs, which are members of the TGF-beta superfamily. BMPs are





involved in endochondral bone formation and embryogenesis. These proteins transduce their signals through the formation of heteromeric complexes of 2 different types of serine (threonine) kinase receptors: type I receptors of about 50-55 kD and type II receptors of about 70-80 kD. Type II receptors bind ligands in the absence of type I receptors, but they require their respective type I receptors for signaling, whereas type I receptors require their respective type II receptors for ligand binding. Mutations in this gene have been associated with primary pulmonary hypertension. Several transcript variants encoding two different isoforms have been found for thi

Immunohistochemical analysis of paraffin-embedded Human-placenta, antibody was diluted at 1:100



Immunohistochemical analysis of paraffin-embedded Human-placenta, antibody was diluted at 1:100

