

ASPP1 rabbit pAb

Cat No.:ES8768

For research use only

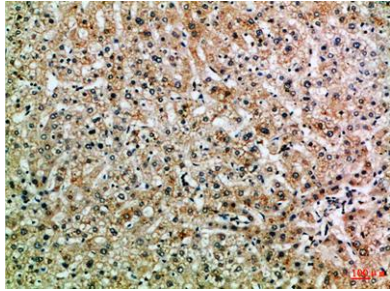
Overview

Product Name	ASPP1 rabbit pAb
Host species	Rabbit
Applications	IHC;IF;ELISA
Species Cross-Reactivity	Human;Rat;Mouse;
Recommended dilutions	IHC-p 1:50-200, ELISA 1:10000-20000
Immunogen	Synthetic peptide from human protein at AA range: 630-680
Specificity	The antibody detects endogenous ASPP1
Formulation	Liquid in PBS containing 50% glycerol, 0.5% BSA and 0.02% sodium azide.
Storage	Store at -20°C. Avoid repeated freeze-thaw cycles.
Protein Name	Apoptosis-stimulating of p53 protein 1 (Protein phosphatase 1 regulatory subunit 13B)
Gene Name	PPP1R13B ASPP1 KIAA0771
Cellular localization	Cytoplasm . Nucleus . Predominantly cytoplasmic. Some fraction is nuclear.
Purification	The antibody was affinity-purified from rabbit antiserum by affinity-chromatography using epitope-specific immunogen.
Clonality	Polyclonal
Concentration	1 mg/ml
Observed band	
Human Gene ID	23368
Human Swiss-Prot Number	Q96KQ4
Alternative Names	Apoptosis-stimulating of p53 protein 1 (Protein phosphatase 1 regulatory subunit 13B)
Background	This gene encodes a member of the ASPP (apoptosis-stimulating protein of p53) family of p53 interacting proteins. The protein contains four ankyrin repeats and an SH3 domain involved in protein-protein interactions. ASPP proteins are required for the induction of apoptosis by p53-family proteins. They promote DNA binding and



transactivation of p53-family proteins on the promoters of proapoptotic genes. Expression of this gene is regulated by the E2F transcription factor. [provided by RefSeq, Jul 2008],

Immunohistochemical analysis of paraffin-embedded Human-liver, antibody was diluted at 1:100



Immunohistochemical analysis of paraffin-embedded Human-liver, antibody was diluted at 1:100

