

# LT- $\beta$ rabbit pAb

Cat No.:ES8728

For research use only

## Overview

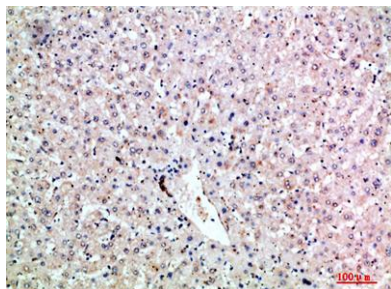
Product Name	LT- $\beta$ rabbit pAb
Host species	Rabbit
Applications	WB;IHC;IF;ELISA
Species Cross-Reactivity	Human;Rat;Mouse;
Recommended dilutions	IHC-p 1:50-200, ELISA 1:10000-20000,WB 1:500-2000
Immunogen	Synthetic peptide from human protein at AA range: 41-90
Specificity	The antibody detects endogenous LT- $\beta$
Formulation	Liquid in PBS containing 50% glycerol, 0.5% BSA and 0.02% sodium azide.
Storage	Store at -20°C. Avoid repeated freeze-thaw cycles.
Protein Name	Lymphotoxin-beta (LT-beta) (Tumor necrosis factor C) (TNF-C) (Tumor necrosis factor ligand superfamily member 3)
Gene Name	LTB TNFC TNFSF3
Cellular localization	Membrane ; Single-pass type II membrane protein .
Purification	The antibody was affinity-purified from rabbit antiserum by affinity-chromatography using epitope-specific immunogen.
Clonality	Polyclonal
Concentration	1 mg/ml
Observed band	
Human Gene ID	4050
Human Swiss-Prot Number	Q06643
Alternative Names	Lymphotoxin-beta (LT-beta;Tumor necrosis factor C;TNF-C;Tumor necrosis factor ligand superfamily member 3)
Background	Lymphotoxin beta is a type II membrane protein of the TNF family. It anchors lymphotoxin-alpha to the cell surface through heterotrimer formation. The predominant form on the lymphocyte surface is the lymphotoxin-alpha 1/beta 2 complex (e.g. 1



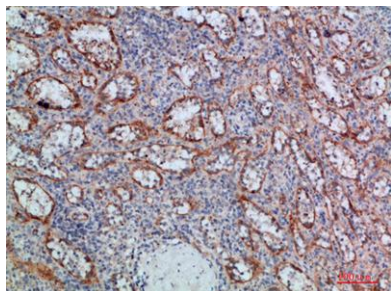


molecule alpha/2 molecules beta) and this complex is the primary ligand for the lymphotoxin-beta receptor. The minor complex is lymphotoxin-alpha 2/beta 1. LTB is an inducer of the inflammatory response system and involved in normal development of lymphoid tissue. Lymphotoxin-beta isoform b is unable to complex with lymphotoxin-alpha suggesting a function for lymphotoxin-beta which is independent of lymphotoxin-alpha. Alternative splicing results in multiple transcript variants encoding different isoforms. [provided by RefSeq, Jul 2008],

Immunohistochemical analysis of paraffin-embedded human-liver, antibody was diluted at 1:200



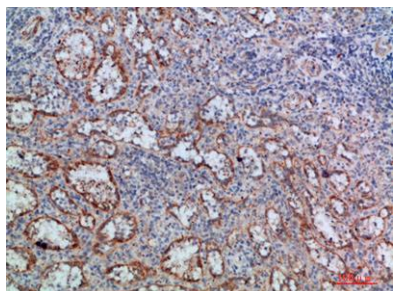
Immunohistochemical analysis of paraffin-embedded human-spleen, antibody was diluted at 1:200





**ELK Biotechnology**

Immunohistochemical analysis of paraffin-embedded human-spleen, antibody was diluted at 1:200



+86-27-59760950

[ELKbio@ELKbiotech.com](mailto:ELKbio@ELKbiotech.com)

[www.elkbiotech.com](http://www.elkbiotech.com)

23-2, No.388 Gaoxin 2nd Road, Wuhan East Lake Hi-tech Development Zone, Hubei, P.R.C.