



# ENA-78 rabbit pAb

Cat No.:ES8718

For research use only

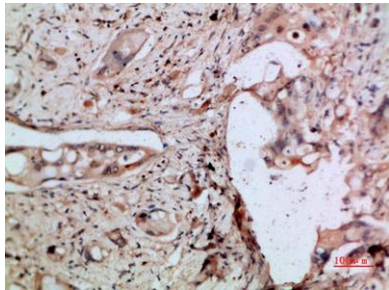
## Overview

Product Name	ENA-78 rabbit pAb
Host species	Rabbit
Applications	IHC;IF;ELISA
Species Cross-Reactivity	Human;Rat;Mouse;
Recommended dilutions	IHC-p 1:50-200, ELISA 1:10000-20000
Immunogen	Synthetic peptide from human protein at AA range: 65-114
Specificity	The antibody detects endogenous ENA-78
Formulation	Liquid in PBS containing 50% glycerol, 0.5% BSA and 0.02% sodium azide.
Storage	Store at -20°C. Avoid repeated freeze-thaw cycles.
Protein Name	C-X-C motif chemokine 5 (ENA-78(1-78)) (Epithelial-derived neutrophil-activating protein 78) (Neutrophil-activating peptide ENA-78) (Small-inducible cytokine B5) [Cleaved into: ENA-78(8-78); ENA-78(9-78)]
Gene Name	CXCL5 ENA78 SCYB5
Cellular localization	Secreted.
Purification	The antibody was affinity-purified from rabbit antiserum by affinity-chromatography using epitope-specific immunogen.
Clonality	Polyclonal
Concentration	1 mg/ml
Observed band	
Human Gene ID	6374
Human Swiss-Prot Number	P42830
Alternative Names	C-X-C motif chemokine 5 (ENA-78(1-78);Epithelial-derived neutrophil-activating protein 78;Neutrophil-activating peptide ENA-78;Small-inducible cytokine B5) [Cleaved into: ENA-78(8-78); ENA-78(9-78)]
Background	This gene encodes a protein that is a member of the



CXC subfamily of chemokines. Chemokines, which recruit and activate leukocytes, are classified by function (inflammatory or homeostatic) or by structure. This protein is proposed to bind the G-protein coupled receptor chemokine (C-X-C motif) receptor 2 to recruit neutrophils, to promote angiogenesis and to remodel connective tissues. This protein is thought to play a role in cancer cell proliferation, migration, and invasion. [provided by RefSeq, May 2013],

Immunohistochemical analysis of paraffin-embedded human-pancreas-cancer, antibody was diluted at 1:200



Immunohistochemical analysis of paraffin-embedded human-pancreas-cancer, antibody was diluted at 1:200

