

Eotaxin-2 rabbit pAb

Cat No.:ES8716

For research use only

Overview

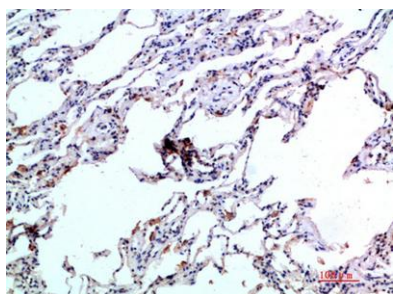
Product Name	Eotaxin-2 rabbit pAb
Host species	Rabbit
Applications	IHC;IF;ELISA
Species Cross-Reactivity	Human;Rat;Mouse;
Recommended dilutions	IHC-p 1:50-200, ELISA 1:10000-20000
Immunogen	Synthetic peptide from human protein at AA range: 61-110
Specificity	The antibody detects endogenous Eotaxin-2
Formulation	Liquid in PBS containing 50% glycerol, 0.5% BSA and 0.02% sodium azide.
Storage	Store at -20°C. Avoid repeated freeze-thaw cycles.
Protein Name	C-C motif chemokine 24 (CK-beta-6) (Eosinophil chemotactic protein 2) (Eotaxin-2) (Myeloid progenitor inhibitory factor 2) (MPIF-2) (Small-inducible cytokine A24)
Gene Name	CCL24 MPIF2 SCYA24
Cellular localization	Secreted .
Purification	The antibody was affinity-purified from rabbit antiserum by affinity-chromatography using epitope-specific immunogen.
Clonality	Polyclonal
Concentration	1 mg/ml
Observed band	
Human Gene ID	6369
Human Swiss-Prot Number	O00175
Alternative Names	C-C motif chemokine 24 (CK-beta-6;Eosinophil chemotactic protein 2;Eotaxin-2;Myeloid progenitor inhibitory factor 2;MPIF-2;Small-inducible cytokine A24)
Background	This gene belongs to the subfamily of small cytokine CC genes. Cytokines are a family of secreted proteins involved in immunoregulatory and inflammatory processes. The CC cytokines are





proteins characterized by two adjacent cysteines. The cytokine encoded by this gene displays chemotactic activity on resting T lymphocytes, a minimal activity on neutrophils, and is negative on monocytes and activated T lymphocytes. The protein is also a strong suppressor of colony formation by a multipotential hematopoietic progenitor cell line. [provided by RefSeq, Jul 2008],

Immunohistochemical analysis of paraffin-embedded human-lung, antibody was diluted at 1:200



Immunohistochemical analysis of paraffin-embedded human-lung, antibody was diluted at 1:200

