

IL-1F7 rabbit pAb

Cat No.:ES8711

For research use only

Overview

Product Name	IL-1F7 rabbit pAb
Host species	Rabbit
Applications	IHC;IF;ELISA
Species Cross-Reactivity	Human;Rat;Mouse;
Recommended dilutions	IHC-p 1:50-200, ELISA 1:10000-20000
Immunogen	Synthetic peptide from human protein at AA range: 101-150
Specificity	The antibody detects endogenous IL-1F7
Formulation	Liquid in PBS containing 50% glycerol, 0.5% BSA and 0.02% sodium azide.
Storage	Store at -20°C. Avoid repeated freeze-thaw cycles.
Protein Name	Interleukin-37 (FIL1 zeta) (IL-1X) (Interleukin-1 family member 7) (IL-1F7) (Interleukin-1 homolog 4) (IL-1H) (IL-1H4) (Interleukin-1 zeta) (IL-1 zeta) (Interleukin-1-related protein) (IL-1RP1) (Inter
Gene Name	IL37 FIL1Z IL1F7 IL1H4 IL1RP1
Cellular localization	Cytoplasm, cytosol . Nucleus . Secreted . Stimulation with IL1B leads to colocalization with SMAD3 mostly in perinuclear regions (PubMed:20935647, PubMed:33674380). Only the CASP1-cleaved mature form translocates into the nucleus upon LPS stimulation (PubMed:18390730). The secretion is dependent on protein unfolding and facilitated by the cargo receptor TMED10; it results in protein translocation from the cytoplasm into the ERGIC (endoplasmic reticulum-Golgi intermediate compartment) followed by vesicle entry and secretion (PubMed:32272059, PubMed:33674380). .
Purification	The antibody was affinity-purified from rabbit antiserum by affinity-chromatography using epitope-specific immunogen.
Clonality	Polyclonal
Concentration	1 mg/ml





Observed band

Human Gene ID

27178

Human Swiss-Prot Number

Q9NZH6

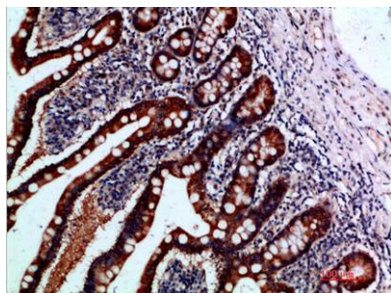
Alternative Names

Interleukin-37 (FIL1 zeta;IL-1X;Interleukin-1 family member 7;IL-1F7;Interleukin-1 homolog 4;IL-1H;IL-1H4;Interleukin-1 zeta;IL-1 zeta;Interleukin-1-related protein;IL-1RP1;Interleukin-23;IL-37)

Background

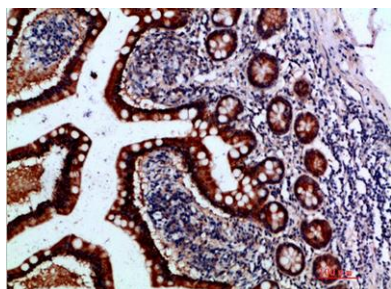
The protein encoded by this gene is a member of the interleukin 1 cytokine family. This cytokine can bind to, and may be a ligand for interleukin 18 receptor (IL18R1/IL-1Rrp). This cytokine also binds to interleukin 18 binding protein (IL18BP), an inhibitory binding protein of interleukin 18 (IL18), and subsequently forms a complex with IL18 receptor beta subunit, and through which it inhibits the activity of IL18. This gene along with eight other interleukin 1 family genes form a cytokine gene cluster on chromosome 2. Five alternatively spliced transcript variants encoding distinct isoforms have been reported. [provided by RefSeq, Jul 2008],

Immunohistochemical analysis of paraffin-embedded human-small-intestine, antibody was diluted at 1:200

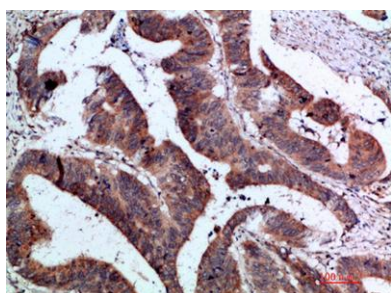




Immunohistochemical analysis of paraffin-embedded human-small-intestine, antibody was diluted at 1:200



Immunohistochemical analysis of paraffin-embedded human-colon-cancer, antibody was diluted at 1:200



Immunohistochemical analysis of paraffin-embedded human-colon-cancer, antibody was diluted at 1:200

