

PDGF-C rabbit pAb

Cat No.:ES8707

For research use only

Overview

Product Name	PDGF-C rabbit pAb
Host species	Rabbit
Applications	IHC;IF;ELISA
Species Cross-Reactivity	Human;Mouse;Rat
Recommended dilutions	IHC-p 1:50-200, ELISA 1:10000-20000
Immunogen	Synthetic peptide from human protein at AA range: 61-110
Specificity	The antibody detects endogenous PDGF-C
Formulation	Liquid in PBS containing 50% glycerol, 0.5% BSA and 0.02% sodium azide.
Storage	Store at -20°C. Avoid repeated freeze-thaw cycles.
Protein Name	Platelet-derived growth factor C (PDGF-C) (Fallotein) (Spinal cord-derived growth factor) (SCDGF) (VEGF-E) [Cleaved into: Platelet-derived growth factor C, latent form (PDGFC latent form); Platelet-de
Gene Name	PDGFC SCDGF UNQ174/PRO200
Cellular localization	Cytoplasm, cytosol . Secreted . Nucleus . Cytoplasmic granule . Cell membrane . Sumoylated form is predominant in the nucleus (PubMed:15247255). Stored in alpha granules in platelets (PubMed:15061151). .
Purification	The antibody was affinity-purified from rabbit antiserum by affinity-chromatography using epitope-specific immunogen.
Clonality	Polyclonal
Concentration	1 mg/ml
Observed band	
Human Gene ID	56034
Human Swiss-Prot Number	Q9NRA1
Alternative Names	Platelet-derived growth factor C (PDGF-C;Fallotein;Spinal cord-derived growth factor;SCDGF;VEGF-E) [Cleaved into: Platelet-derived

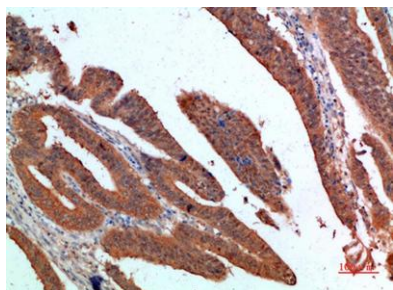




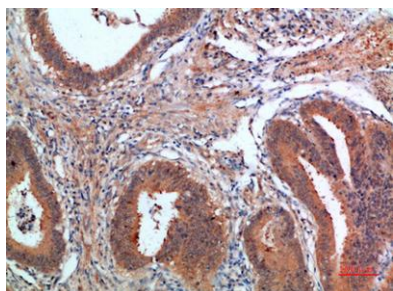
Background

growth factor C, latent form (PDGFC latent form); Platelet-derived growth factor C, receptor-binding form (PDGFC receptor-bi
platelet derived growth factor C(PDGFC) Homo sapiens The protein encoded by this gene is a member of the platelet-derived growth factor family. The four members of this family are mitogenic factors for cells of mesenchymal origin and are characterized by a core motif of eight cysteines. This gene product appears to form only homodimers. It differs from the platelet-derived growth factor alpha and beta polypeptides in having an unusual N-terminal domain, the CUB domain. Alternatively spliced transcript variants have been found for this gene. [provided by RefSeq, Sep 2010],

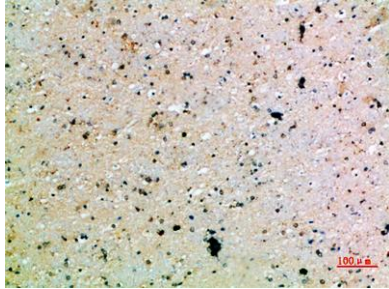
Immunohistochemical analysis of paraffin-embedded human-colon-cancer, antibody was diluted at 1:200



Immunohistochemical analysis of paraffin-embedded human-colon-cancer, antibody was diluted at 1:200



Immunohistochemical analysis of paraffin-embedded human-brain, antibody was diluted at 1:200



Immunohistochemical analysis of paraffin-embedded human-brain, antibody was diluted at 1:200

