



# CD300b rabbit pAb

Cat No.:ES8702

For research use only

## Overview

|                          |   |
|--------------------------|---|
| Product Name             | CD300b rabbit pAb   |
| Host species             | Rabbit  |
| Applications             | IHC;IF;ELISA  |
| Species Cross-Reactivity | Human;Rat;Mouse;  |
| Recommended dilutions    | IHC-p 1:50-200, ELISA 1:10000-20000   |
| Immunogen                | Synthetic peptide from human protein at AA range: 61-110  |
| Specificity              | The antibody detects endogenous CD300b  |
| Formulation              | Liquid in PBS containing 50% glycerol, 0.5% BSA and 0.02% sodium azide.   |
| Storage                  | Store at -20°C. Avoid repeated freeze-thaw cycles.  |
| Protein Name             | CMRF35-like molecule 7 (CLM-7) (CD300 antigen-like family member B) (CMRF35-A2) (Immune receptor expressed on myeloid cells 3) (IREM-3) (Leukocyte mono-Ig-like receptor 5) (Triggering receptor express                            |
| Gene Name                | CD300LB CD300B CLM7 CMRF35A2 IREM3 LMIR5 TREM5 UNQ2530/PRO6029  |
| Cellular localization    | Cell membrane ; Single-pass type I membrane protein .   |
| Purification             | The antibody was affinity-purified from rabbit antiserum by affinity-chromatography using epitope-specific immunogen.   |
| Clonality                | Polyclonal  |
| Concentration            | 1 mg/ml   |
| Observed band            |   |
| Human Gene ID            | 124599  |
| Human Swiss-Prot Number  | A8K4G0  |
| Alternative Names        | CMRF35-like molecule 7 (CLM-7;CD300 antigen-like family member B;CMRF35-A2;Immune receptor expressed on myeloid cells 3;IREM-3;Leukocyte mono-Ig-like receptor 5;Triggering receptor expressed on myeloid cells 5;TREM-5;CD antigen |



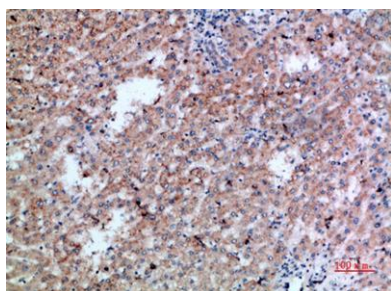


## Background

CD300b)

CD300LB is a nonclassical activating receptor of the immunoglobulin (Ig) superfamily expressed on myeloid cells (Martinez-Barriocanal and Sayos, 2006 [PubMed 16920917]).[supplied by OMIM, Mar 2008],

Immunohistochemical analysis of paraffin-embedded human-liver-cancer, antibody was diluted at 1:200



Immunohistochemical analysis of paraffin-embedded human-liver-cancer, antibody was diluted at 1:200

