



CD300e rabbit pAb

Cat No.:ES8686

For research use only

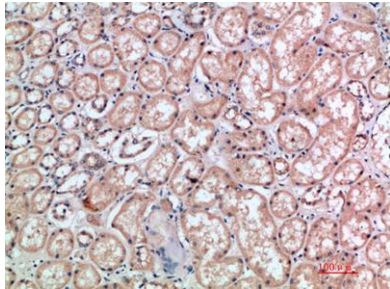
Overview

Product Name	CD300e rabbit pAb
Host species	Rabbit
Applications	IHC;IF;ELISA
Species Cross-Reactivity	Human;Rat;Mouse;
Recommended dilutions	IHC-p 1:50-200, ELISA 1:10000-20000
Immunogen	Synthetic peptide from human protein at AA range: 31-80
Specificity	The antibody detects endogenous CD300e
Formulation	Liquid in PBS containing 50% glycerol, 0.5% BSA and 0.02% sodium azide.
Storage	Store at -20°C. Avoid repeated freeze-thaw cycles.
Protein Name	CMRF35-like molecule 2 (CLM-2) (CD300 antigen-like family member E) (CMRF35-A5) (Immune receptor expressed on myeloid cells 2) (IREM-2) (Polymeric immunoglobulin receptor 2) (PIgR-2) (PIgR2) (Poly-Ig
Gene Name	CD300E CD300LE CLM2 CMRF35A5 IREM2
Cellular localization	Cell membrane; Single-pass type I membrane protein.
Purification	The antibody was affinity-purified from rabbit antiserum by affinity-chromatography using epitope-specific immunogen.
Clonality	Polyclonal
Concentration	1 mg/ml
Observed band	
Human Gene ID	342510
Human Swiss-Prot Number	Q496F6
Alternative Names	CMRF35-like molecule 2 (CLM-2;CD300 antigen-like family member E;CMRF35-A5;Immune receptor expressed on myeloid cells 2;IREM-2;Polymeric immunoglobulin receptor 2;PIgR-2;PIgR2;Poly-Ig receptor 2;CD antigen CD300e)
Background	CD300e molecule(CD300E) Homo sapiens This



gene encodes a member of the CD300 glycoprotein family of cell surface proteins expressed on myeloid cells. The protein interacts with the TYRO protein tyrosine kinase-binding protein and is thought to act as an activating receptor. [provided by RefSeq, Nov 2012],

Immunohistochemical analysis of paraffin-embedded human-kidney, antibody was diluted at 1:200



Immunohistochemical analysis of paraffin-embedded human-brain, antibody was diluted at 1:200

