

# BLBP rabbit pAb

Cat No.:ES8615

For research use only

## Overview

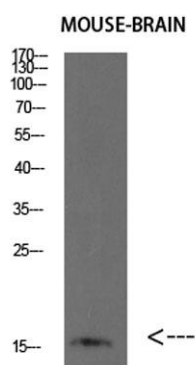
Product Name	BLBP rabbit pAb
Host species	Rabbit
Applications	WB;ELISA
Species Cross-Reactivity	Human;Rat
Recommended dilutions	WB 1:500-2000, ELISA 1:10000-20000
Immunogen	Synthetic peptide from human protein at AA range: 80-132
Specificity	The antibody detects endogenous BLBP
Formulation	Liquid in PBS containing 50% glycerol, 0.5% BSA and 0.02% sodium azide.
Storage	Store at -20°C. Avoid repeated freeze-thaw cycles.
Protein Name	Fatty acid-binding protein, brain (Brain lipid-binding protein) (BLBP) (Brain-type fatty acid-binding protein) (B-FABP) (Fatty acid-binding protein 7) (Mammary-derived growth inhibitor related)
Gene Name	FABP7 BLBP FABPB MRG
Cellular localization	Cytoplasm.
Purification	The antibody was affinity-purified from rabbit antiserum by affinity-chromatography using epitope-specific immunogen.
Clonality	Polyclonal
Concentration	1 mg/ml
Observed band	15kD
Human Gene ID	2173
Human Swiss-Prot Number	O15540
Alternative Names	Fatty acid-binding protein, brain (Brain lipid-binding protein) (BLBP) (Brain-type fatty acid-binding protein) (B-FABP) (Fatty acid-binding protein 7) (Mammary-derived growth inhibitor related)
Background	The gene encodes a small, highly conserved cytoplasmic protein that bind long-chain fatty acids and other hydrophobic ligands. The encoded protein is important in the establishment of the radial glial





**ELK Biotechnology**

fiber in the developing brain. Alternative splicing and promoter usage results in multiple transcript variants encoding different isoforms. Pseudogenes of this gene are found on multiple chromosomes. [provided by RefSeq, Jan 2016],



Western blot analysis of HEPG2 293T SHY5Y Jurkat lysate, antibody was diluted at 500. Secondary antibody(catalog#:RS0002) was diluted at 1:20000



+86-27-59760950

ELKbio@ELKbiotech.com

[www.elkbiotech.com](http://www.elkbiotech.com)

23-2, No.388 Gaoxin 2nd Road,Wuhan East Lake Hi-tech Development Zone, Hubei , P.R.C