

TMPO rabbit pAb

Cat No.:ES8548

For research use only

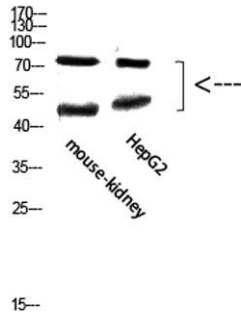
Overview

Product Name	TMPO rabbit pAb
Host species	Rabbit
Applications	WB;ELISA
Species Cross-Reactivity	Human;Mouse;Rat
Recommended dilutions	WB 1:500-2000, ELISA 1:10000-20000
Immunogen	Synthetic peptide from human protein at AA range: 1-50
Specificity	The antibody detects endogenous TMPO protein
Formulation	Liquid in PBS containing 50% glycerol, 0.5% BSA and 0.02% sodium azide.
Storage	Store at -20°C. Avoid repeated freeze-thaw cycles.
Protein Name	thymopoietin
Gene Name	TMPO LAP2
Cellular localization	Nucleus. Chromosome. Expressed diffusely throughout the nucleus.
Purification	The antibody was affinity-purified from rabbit antiserum by affinity-chromatography using epitope-specific immunogen.
Clonality	Polyclonal
Concentration	1 mg/ml
Observed band	75+50kD
Human Gene ID	7112
Human Swiss-Prot Number	P42166/P42167
Alternative Names	TMPO LAP2
Background	The protein encoded by TMPO (thymopoietin) resides in the nucleus and may play a role in the assembly of the nuclear lamina, and thus help maintain the structural organization of the nuclear envelope. It may function as a receptor for the attachment of lamin filaments to the inner nuclear membrane. Mutations in TMPO are associated with dilated cardiomyopathy. Alternatively spliced transcript variants encoding different isoforms have

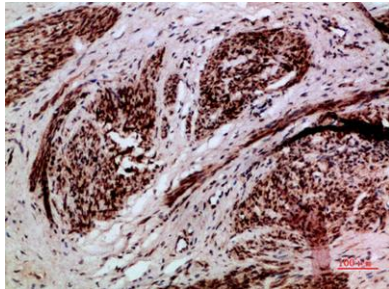


been noted for TMPO.

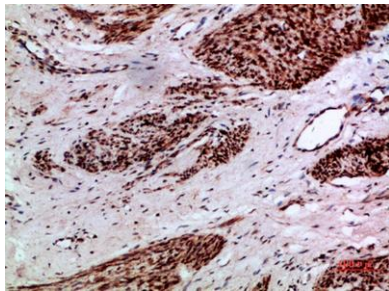
Western Blot analysis of mouse-kidney, hepg2 cells using
Antibody diluted at 800. Secondary
antibody(catalog#:RS0002) was diluted at 1:20000



Immunohistochemical analysis of paraffin-embedded
human-cervical-cancer, antibody was diluted at 1:200



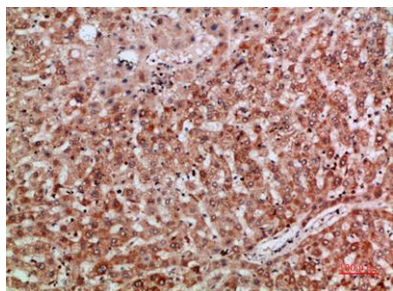
Immunohistochemical analysis of paraffin-embedded
human-cervical-cancer, antibody was diluted at 1:200





ELK Biotechnology

Immunohistochemical analysis of paraffin-embedded human-liver, antibody was diluted at 1:200



+86-27-59760950

ELKbio@ELKbiotech.com

www.elkbiotech.com

23-2, No.388 Gaoxin 2nd Road,Wuhan East Lake Hi-tech Development Zone, Hubei , P.R.C