



CYFIP2 rabbit pAb

Cat No.:ES8500

For research use only

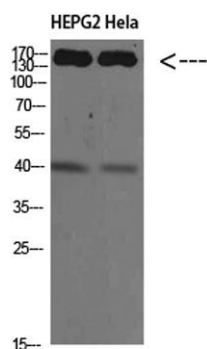
Overview

Product Name	CYFIP2 rabbit pAb
Host species	Rabbit
Applications	WB;ELISA
Species Cross-Reactivity	Human;Mouse;Rat
Recommended dilutions	WB 1:500-2000, ELISA 1:10000-20000
Immunogen	Synthesized peptide derived from CYFIP2 at AA range: 1171-1220
Specificity	CYFIP2 Polyclonal Antibody detects endogenous levels of CYFIP2
Formulation	Liquid in PBS containing 50% glycerol, 0.5% BSA and 0.02% sodium azide.
Storage	Store at -20°C. Avoid repeated freeze-thaw cycles.
Protein Name	CYFIP2
Gene Name	CYFIP2
Cellular localization	Cytoplasm . Nucleus . Cytoplasm, perinuclear region . Cell junction, synapse, synaptosome . Highly expressed in the perinuclear region and enriched in synaptosomes (By similarity). Treatment with leptomycin-B triggers translocation to the nucleus (PubMed:17245118). .
Purification	The antibody was affinity-purified from rabbit antiserum by affinity-chromatography using epitope-specific immunogen.
Clonality	Polyclonal
Concentration	1 mg/ml
Observed band	150+45kD
Human Gene ID	26999
Human Swiss-Prot Number	Q96F07
Alternative Names	Cytoplasmic FMR1-interacting protein 2 (p53-inducible protein 121)
Background	disease:Up-regulated significantly in CD4+ T lymphocytes from patients with multiple sclerosis (at protein level).,function:Involved in T-cell



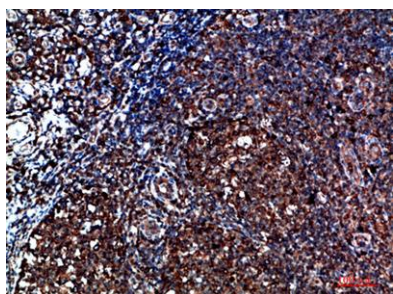


adhesion and p53-dependent induction of apoptosis. Does not bind RNA.,induction:By p53.,RNA editing:Partially edited. Editing appears to be brain-specific.,similarity:Belongs to the CYFIP family.,subcellular location:Highly expressed in the perinuclear region. Enriched in synaptosomes. Treatment with leptomycin-B triggers translocation to the nucleus.,subunit:Interacts with FMR1, FXR1 AND FXR2. Component of the WAVE1 complex composed of ABI2, CYFIP2, C3orf10/HSPC300, NCKAP1 and WASF1/WAVE1. CYFIP2 binds to activated RAC1 which causes the complex to dissociate, releasing activated WASF1. The complex can also be activated by NCK1.,



Western Blot analysis of HEPG2 HeLa cells using CYFIP2 Polyclonal Antibody diluted at 1:500. Secondary antibody(catalog#:RS0002) was diluted at 1:20000

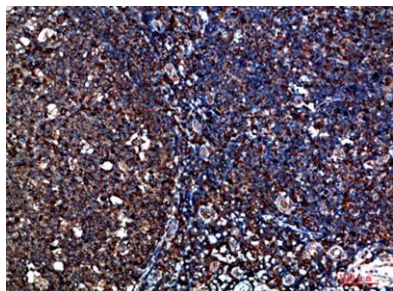
Immunohistochemical analysis of paraffin-embedded human-tonsil, antibody was diluted at 1:200



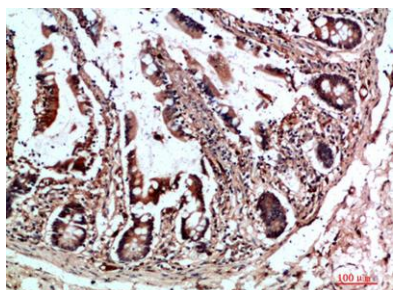


ELK Biotechnology

Immunohistochemical analysis of paraffin-embedded human-tonsil, antibody was diluted at 1:200



Immunohistochemical analysis of paraffin-embedded human-colon, antibody was diluted at 1:200



+86-27-59760950

ELKbio@ELKbiotech.com

www.elkbiotech.com

23-2, No.388 Gaoxin 2nd Road, Wuhan East Lake Hi-tech Development Zone, Hubei, P.R.C.