

TRAF1 rabbit pAb

Cat No.:ES8493

For research use only

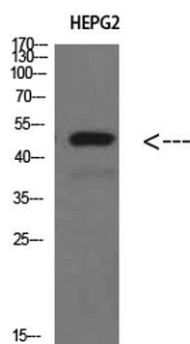
Overview

Product Name	TRAF1 rabbit pAb
Host species	Rabbit
Applications	WB;ELISA
Species Cross-Reactivity	Human;Mouse
Recommended dilutions	WB 1:500-2000, ELISA 1:10000-20000
Immunogen	Synthesized peptide derived from TRAF1 at AA range: 191-240
Specificity	TRAF1 Polyclonal Antibody detects endogenous levels of TRAF1
Formulation	Liquid in PBS containing 50% glycerol, 0.5% BSA and 0.02% sodium azide.
Storage	Store at -20°C. Avoid repeated freeze-thaw cycles.
Protein Name	TRAF1
Gene Name	TRAF1
Cellular localization	cytoplasm,cytosol,
Purification	The antibody was affinity-purified from rabbit antiserum by affinity-chromatography using epitope-specific immunogen.
Clonality	Polyclonal
Concentration	1 mg/ml
Observed band	46kD
Human Gene ID	7185
Human Swiss-Prot Number	Q13077
Alternative Names	TNF receptor-associated factor 1 (Epstein-Barr virus-induced protein 6)
Background	TNF receptor associated factor 1(TRAF1) Homo sapiens The protein encoded by this gene is a member of the TNF receptor (TNFR) associated factor (TRAF) protein family. TRAF proteins associate with, and mediate the signal transduction from various receptors of the TNFR superfamily. This protein and TRAF2 form a heterodimeric complex, which is required for TNF-alpha-mediated activation





of MAPK8/JNK and NF-kappaB. The protein complex formed by this protein and TRAF2 also interacts with inhibitor-of-apoptosis proteins (IAPs), and thus mediates the anti-apoptotic signals from TNF receptors. The expression of this protein can be induced by Epstein-Barr virus (EBV). EBV infection membrane protein 1 (LMP1) is found to interact with this and other TRAF proteins; this interaction is thought to link LMP1-mediated B lymphocyte transformation to the signal transduction from TNFR family receptors. Three transcript variants encoding two different isoforms have



Western Blot analysis of HEPG2 cells using TRAF1
Polyclonal Antibody diluted at 1:500. Secondary
antibody(catalog#:RS0002) was diluted at 1:20000

