

# MUM1 rabbit pAb

Cat No.:ES8471

For research use only

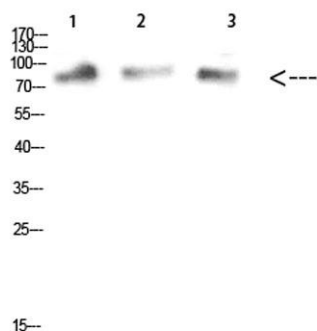
## Overview

Product Name	MUM1 rabbit pAb
Host species	Rabbit
Applications	WB;ELISA;IHC
Species Cross-Reactivity	Human;Mouse;Rat
Recommended dilutions	WB 1:500-2000;IHC-p 1:50-300; ELISA 2000-20000
Immunogen	The antiserum was produced against synthesized peptide derived from the C-terminal region of human MUM1. AA range:661-710
Specificity	MUM1 Polyclonal Antibody detects endogenous levels of MUM1
Formulation	Liquid in PBS containing 50% glycerol, 0.5% BSA and 0.02% sodium azide.
Storage	Store at -20°C. Avoid repeated freeze-thaw cycles.
Protein Name	MUM1
Gene Name	MUM1 EXPAND1
Cellular localization	Nucleus . Recruited to DNA damage sites via its interaction with the BRCT domain of TP53BP1.
Purification	The antibody was affinity-purified from rabbit antiserum by affinity-chromatography using epitope-specific immunogen.
Clonality	Polyclonal
Concentration	1 mg/ml
Observed band	78kD
Human Gene ID	84939
Human Swiss-Prot Number	Q2TAK8
Alternative Names	melanoma associated antigen (mutated) 1
Background	PTM:Phosphorylated upon DNA damage, probably by ATM or ATR.,similarity:Belongs to the MUM1 family.,



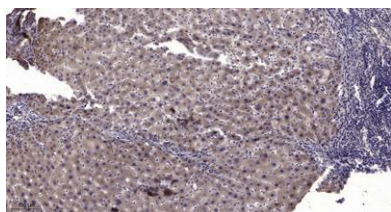


**ELK Biotechnology**



1,mouse-kidney 2,mouse-heart 3,mouse-brain

Western Blot analysis of mouse-kidney mouse-heart mouse-brain cells using MUM1 Polyclonal Antibody diluted at 1:1000. Secondary antibody(catalog#:RS0002) was diluted at 1:20000



Immunohistochemical analysis of paraffin-embedded human liver cancer. 1, Antibody was diluted at 1:200(4° overnight). 2, Tris-EDTA,pH9.0 was used for antigen retrieval. 3,Secondary antibody was diluted at 1:200(room temperature, 45min).



+86-27-59760950

[ELKbio@ELKbiotech.com](mailto:ELKbio@ELKbiotech.com)

[www.elkbiotech.com](http://www.elkbiotech.com)

23-2, No.388 Gaoxin 2nd Road,Wuhan East Lake Hi-tech Development Zone, Hubei , P.R.C