



# CD35 rabbit pAb

Cat No.:ES8467

For research use only

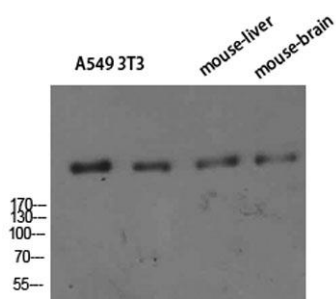
## Overview

Product Name	CD35 rabbit pAb
Host species	Rabbit
Applications	WB;ELISA
Species Cross-Reactivity	Human;Rat;Mouse;
Recommended dilutions	WB 1:500-2000, ELISA 1:10000-20000
Immunogen	The antiserum was produced against synthesized peptide derived from the Internal region of human CR1/CR1L. AA range:300-350 & 740-790
Specificity	CD35 Polyclonal Antibody detects endogenous levels of CD35
Formulation	Liquid in PBS containing 50% glycerol, 0.5% BSA and 0.02% sodium azide.
Storage	Store at -20°C. Avoid repeated freeze-thaw cycles.
Protein Name	CD35
Gene Name	
Cellular localization	Membrane ; Single-pass type I membrane protein.
Purification	The antibody was affinity-purified from rabbit antiserum by affinity-chromatography using epitope-specific immunogen.
Clonality	Polyclonal
Concentration	1 mg/ml
Observed band	220kD
Human Gene ID	1378
Human Swiss-Prot Number	P17927/Q2VPA4
Alternative Names	complement component (3b/4b) receptor 1/2 (Knops blood group)
Background	This gene is a member of the receptors of complement activation (RCA) family and is located in the 'cluster RCA' region of chromosome 1. The gene encodes a monomeric single-pass type I membrane glycoprotein found on erythrocytes, leukocytes, glomerular podocytes, and splenic follicular dendritic cells. The Knops blood group system is a





system of antigens located on this protein. The protein mediates cellular binding to particles and immune complexes that have activated complement. Decreases in expression of this protein and/or mutations in its gene have been associated with gallbladder carcinomas, mesangiocapillary glomerulonephritis, systemic lupus erythematosus and sarcoidosis. Mutations in this gene have also been associated with a reduction in Plasmodium falciparum rosetting, conferring protection against severe malaria. Alternate allele-specific splice variants



Western Blot analysis of A549 3T3 mouse-liver mouse-brain cells using CD35 Polyclonal Antibody diluted at 1:800. Secondary antibody(catalog#:RS0002) was diluted at 1:20000

