



# CD238 rabbit pAb

Cat No.:ES8466

For research use only

## Overview

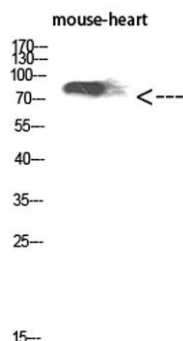
Product Name	CD238 rabbit pAb
Host species	Rabbit
Applications	WB;ELISA
Species Cross-Reactivity	Human;Rat;Mouse;
Recommended dilutions	WB 1:500-2000, ELISA 1:10000-20000
Immunogen	The antiserum was produced against synthesized peptide derived from the Internal region of human KEL. AA range:351-400
Specificity	CD238 Polyclonal Antibody detects endogenous levels of CD238
Formulation	Liquid in PBS containing 50% glycerol, 0.5% BSA and 0.02% sodium azide.
Storage	Store at -20°C. Avoid repeated freeze-thaw cycles.
Protein Name	CD238
Gene Name	KEL
Cellular localization	Cell membrane; Single-pass type II membrane protein. Spans the erythrocyte membrane, and is attached to the underlying cytoskeleton.
Purification	The antibody was affinity-purified from rabbit antiserum by affinity-chromatography using epitope-specific immunogen.
Clonality	Polyclonal
Concentration	1 mg/ml
Observed band	82kD
Human Gene ID	3792
Human Swiss-Prot Number	P23276
Alternative Names	Kell blood group, metallo-endopeptidase
Background	This gene encodes a type II transmembrane glycoprotein that is the highly polymorphic Kell blood group antigen. The Kell glycoprotein links via a single disulfide bond to the XK membrane protein that carries the Kx antigen. The encoded protein contains sequence and structural similarity to





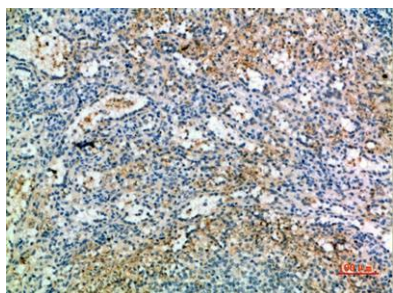
**ELK Biotechnology**

members of the neprilysin (M13) family of zinc endopeptidases. [provided by RefSeq, Jul 2008],



Western Blot analysis of mouse-heart cells using CD238 Polyclonal Antibody diluted at 1:1000. Secondary antibody(catalog#:RS0002) was diluted at 1:20000

Immunohistochemical analysis of paraffin-embedded human-spleen, antibody was diluted at 1:200



+86-27-59760950

ELKbio@ELKbiotech.com

[www.elkbiotech.com](http://www.elkbiotech.com)

23-2, No.388 Gaoxin 2nd Road,Wuhan East Lake Hi-tech Development Zone, Hubei , P.R.C