



# CTACK rabbit pAb

Cat No.:ES8403

For research use only

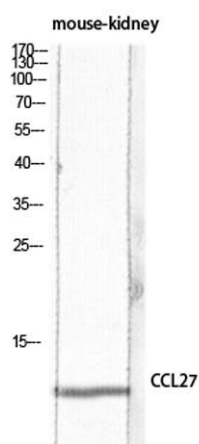
## Overview

<b>Product Name</b>	CTACK rabbit pAb
<b>Host species</b>	Rabbit
<b>Applications</b>	WB;IHC;IF;ELISA
<b>Species Cross-Reactivity</b>	Human;Rat;Mouse;
<b>Recommended dilutions</b>	Western Blot: 1/500 - 1/2000. IHC-p: 1:100-1:300. ELISA: 1/10000. Not yet tested in other applications.
<b>Immunogen</b>	Synthesized peptide derived from C-C motif chemokine 27 at AA range: 51-100
<b>Specificity</b>	CTACK Polyclonal Antibody detects endogenous levels of CTACK protein.
<b>Formulation</b>	Liquid in PBS containing 50% glycerol, 0.5% BSA and 0.02% sodium azide.
<b>Storage</b>	Store at -20°C. Avoid repeated freeze-thaw cycles.
<b>Protein Name</b>	C-C motif chemokine 27
<b>Gene Name</b>	CCL27
<b>Cellular localization</b>	Secreted .
<b>Purification</b>	The antibody was affinity-purified from rabbit antiserum by affinity-chromatography using epitope-specific immunogen.
<b>Clonality</b>	Polyclonal
<b>Concentration</b>	1 mg/ml
<b>Observed band</b>	12kD
<b>Human Gene ID</b>	10850
<b>Human Swiss-Prot Number</b>	Q9Y4X3
<b>Alternative Names</b>	CCL27; ILC; SCYA27; C-C motif chemokine 27; CC chemokine ILC; Cutaneous T-cell-attracting chemokine; CTACK; ESkin; IL-11 R-alpha-locus chemokine; Skinkine; Small-inducible cytokine A27
<b>Background</b>	This gene is one of several CC cytokine genes clustered on the p-arm of chromosome 9. Cytokines are a family of secreted proteins involved in immunoregulatory and inflammatory processes. The CC cytokines are proteins characterized by two



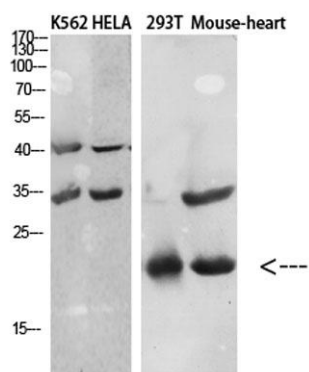
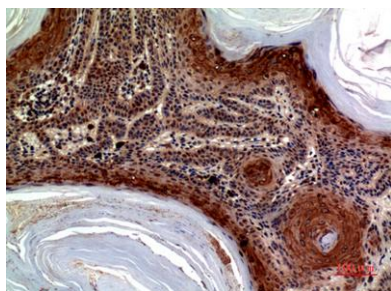


adjacent cysteines. The protein encoded by this gene is chemotactic for skin-associated memory T lymphocytes. This cytokine may also play a role in mediating homing of lymphocytes to cutaneous sites. It specifically binds to chemokine receptor 10 (CCR10). Studies of a similar murine protein indicate that these protein-receptor interactions have a pivotal role in T cell-mediated skin inflammation. [provided by RefSeq, Sep 2014],



Western blot analysis of mouse-kidney lysis using CCL27 antibody. Antibody was diluted at 1:1000. Secondary antibody(catalog#:RS0002) was diluted at 1:20000

Immunohistochemical analysis of paraffin-embedded human-skin, antibody was diluted at 1:100



Western Blot analysis of various cells using Antibody diluted at 1:1000. Secondary antibody(catalog#:RS0002) was diluted at 1:20000





**ELK Biotechnology**



+86-27-59760950

[ELKbio@ELKbiotech.com](mailto:ELKbio@ELKbiotech.com)

[www.elkbiotech.com](http://www.elkbiotech.com)

23-2, No.388 Gaoxin 2nd Road,Wuhan East Lake Hi-tech Development Zone, Hubei , P.R.C