



CD72 rabbit pAb

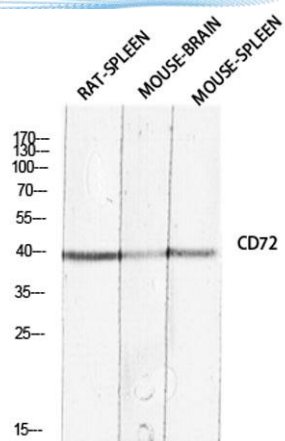
Cat No.:ES8388

For research use only

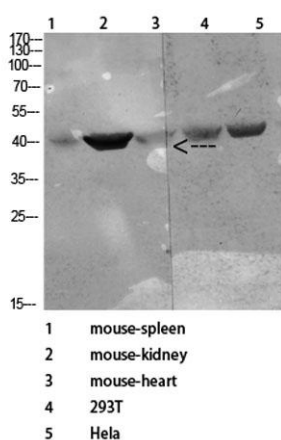
Overview

Product Name	CD72 rabbit pAb
Host species	Rabbit
Applications	WB;IHC;IF;ELISA
Species Cross-Reactivity	Human;Rat;Mouse;
Recommended dilutions	IHC-p: 100-300.Western Blot: 1/500 - 1/2000. ELISA: 1/10000. Not yet tested in other applications.
Immunogen	The antiserum was produced against synthesized peptide derived from the Internal region of human CD72. AA range:170-220
Specificity	CD72 Polyclonal Antibody detects endogenous levels of CD72 protein.
Formulation	Liquid in PBS containing 50% glycerol, 0.5% BSA and 0.02% sodium azide.
Storage	Store at -20°C. Avoid repeated freeze-thaw cycles.
Protein Name	B-cell differentiation antigen CD72
Gene Name	CD72
Cellular localization	Membrane; Single-pass type II membrane protein.
Purification	The antibody was affinity-purified from rabbit antiserum by affinity-chromatography using epitope-specific immunogen.
Clonality	Polyclonal
Concentration	1 mg/ml
Observed band	40kD
Human Gene ID	971
Human Swiss-Prot Number	P21854
Alternative Names	CD72; B-cell differentiation antigen CD72; Lyb-2; CD72
Background	function:Plays a role in B-cell proliferation and differentiation. Associates with CD5.,online information:CD72,similarity:Contains 1 C-type lectin domain.,subunit:Homodimer; disulfide-linked.,tissue specificity:Pre-B-cells and B-cells but not terminally differentiated plasma cells.,

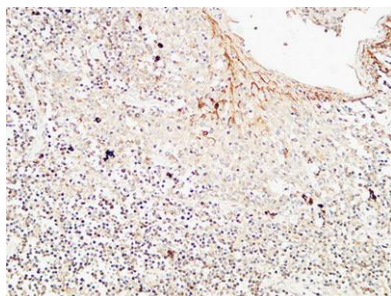




Western blot analysis of RAT-SPLEEN MOUSE-BRAIN
MOUSE-SPLEEN lysis using CD72 antibody. Antibody was
diluted at 1:2000. Secondary antibody(catalog#:RS0002)
was diluted at 1:20000

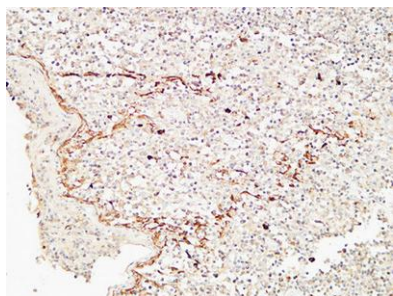


Western Blot analysis of various cells using Antibody
diluted at 1:1000. Secondary antibody(catalog#:RS0002)
was diluted at 1:20000



Immunohistochemical analysis of paraffin-embedded
Human Amygdala. 1, Antibody was diluted at 1:100(4°
overnight). 2, High-pressure and temperature EDTA,
pH8.0 was used for antigen retrieval. 3,Secondary
antibody was diluted at 1:200(room temperature, 30m





Immunohistochemical analysis of paraffin-embedded Human Amygdala. 1, Antibody was diluted at 1:100(4° overnight). 2, High-pressure and temperature EDTA, pH8.0 was used for antigen retrieval. 3,Secondary antibody was diluted at 1:200(room temperature, 30min).

