

SEC22B rabbit pAb

Cat No.:ES8362

For research use only

Overview

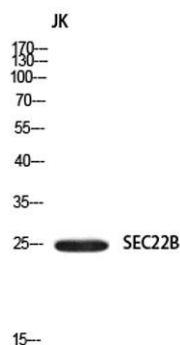
Product Name	SEC22B rabbit pAb
Host species	Rabbit
Applications	WB;IHC;IF;ELISA
Species Cross-Reactivity	Human;Mouse;Rat
Recommended dilutions	Western Blot: 1/500 - 1/2000. IHC-p: 1:100-1:300. ELISA: 1/10000. Not yet tested in other applications.
Immunogen	Synthesized peptide derived from the Internal region of human SEC22B.
Specificity	SEC22B Polyclonal Antibody detects endogenous levels of SEC22B protein.
Formulation	Liquid in PBS containing 50% glycerol, 0.5% BSA and 0.02% sodium azide.
Storage	Store at -20°C. Avoid repeated freeze-thaw cycles.
Protein Name	Vesicle-trafficking protein SEC22b
Gene Name	SEC22B
Cellular localization	Endoplasmic reticulum membrane ; Single-pass type IV membrane protein . Endoplasmic reticulum-Golgi intermediate compartment membrane . Golgi apparatus, cis-Golgi network membrane . Golgi apparatus, trans-Golgi network membrane . Melanosome . Concentrated
Purification	The antibody was affinity-purified from rabbit antiserum by affinity-chromatography using epitope-specific immunogen.
Clonality	Polyclonal
Concentration	1 mg/ml
Observed band	23kD
Human Gene ID	9554
Human Swiss-Prot Number	O75396
Alternative Names	SEC22B; SEC22L1; Vesicle-trafficking protein SEC22b; ER-Golgi SNARE of 24 kDa; ERS-24; ERS24; SEC22 vesicle-trafficking protein homolog B; SEC22 vesicle-trafficking protein-like 1



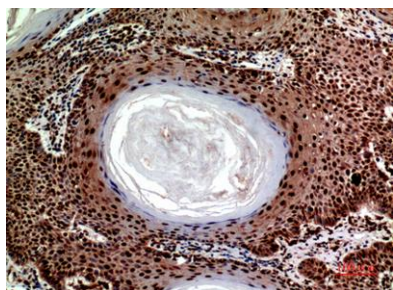


Background

The protein encoded by this gene is a member of the SEC22 family of vesicle trafficking proteins. It seems to complex with SNARE and it is thought to play a role in the ER-Golgi protein trafficking. This protein has strong similarity to *Mus musculus* and *Cricetulus griseus* proteins.[provided by RefSeq, Sep 2009],



Western blot analysis of JK using SEC22B antibody.
Secondary antibody(catalog#:RS0002) was diluted at 1:20000



Immunohistochemical analysis of paraffin-embedded human-skin, antibody was diluted at 1:100

