

NHERF-2 rabbit pAb

Cat No.:ES8358

For research use only

Overview

Product Name	NHERF-2 rabbit pAb
Host species	Rabbit
Applications	WB;ELISA
Species Cross-Reactivity	Human;Mouse;Rat
Recommended dilutions	Western Blot: 1/500 - 1/2000. ELISA: 1/10000. Not yet tested in other applications.
Immunogen	Synthesized peptide derived from NHERF-2 . at AA range: 20-100
Specificity	NHERF-2 Polyclonal Antibody detects endogenous levels of NHERF-2 protein.
Formulation	Liquid in PBS containing 50% glycerol, 0.5% BSA and 0.02% sodium azide.
Storage	Store at -20°C. Avoid repeated freeze-thaw cycles.
Protein Name	Na(+)/H(+) exchange regulatory cofactor NHE-RF2
Gene Name	SLC9A3R2
Cellular localization	Endomembrane system ; Peripheral membrane protein . Nucleus . Apical cell membrane . Localizes with EZR and PODXL at the apical cell membrane of glomerular epithelium cells and the sides of the food processes (By similarity). Nuclear, in a punctate patter
Purification	The antibody was affinity-purified from rabbit antiserum by affinity-chromatography using epitope-specific immunogen.
Clonality	Polyclonal
Concentration	1 mg/ml
Observed band	37kD
Human Gene ID	9351
Human Swiss-Prot Number	Q15599
Alternative Names	SLC9A3R2; NHERF2; Na(+)/H(+) exchange regulatory cofactor NHE-RF2; NHERF-2; NHE3 kinase A regulatory protein E3KARP; SRY-interacting protein 1; SIP-1; Sodium-hydrogen exchanger regulatory

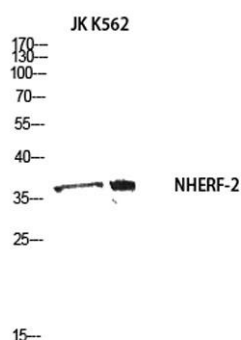




Background

factor 2; Solute carrier family 9 isoform A3
regulatory factor 2; T

This gene encodes a member of the NHERF family of PDZ scaffolding proteins. These proteins mediate many cellular processes by binding to and regulating the membrane expression and protein-protein interactions of membrane receptors and transport proteins. The encoded protein plays a role in intestinal sodium absorption by regulating the activity of the sodium/hydrogen exchanger 3, and may also regulate the cystic fibrosis transmembrane regulator (CFTR) ion channel. Alternatively spliced transcript variants encoding multiple isoforms have been observed for this gene. [provided by RefSeq, Nov 2011],



Western blot analysis of JK K562 using NHERF-2 antibody.
Secondary antibody(catalog#:RS0002) was diluted at
1:20000

