

# POM121 rabbit pAb

Cat No.:ES8121

For research use only

## Overview

Product Name	POM121 rabbit pAb
Host species	Rabbit
Applications	WB;IHC;IF;ELISA
Species Cross-Reactivity	Human;Mouse;Rat
Recommended dilutions	Western Blot: 1/500 - 1/2000. Immunohistochemistry: 1/100 - 1/300. ELISA: 1/40000. Not yet tested in other applications.
Immunogen	The antiserum was produced against synthesized peptide derived from human POM121. AA range:1197-1246
Specificity	POM121 Polyclonal Antibody detects endogenous levels of POM121 protein.
Formulation	Liquid in PBS containing 50% glycerol, 0.5% BSA and 0.02% sodium azide.
Storage	Store at -20°C. Avoid repeated freeze-thaw cycles.
Protein Name	Nuclear envelope pore membrane protein POM 121
Gene Name	POM121
Cellular localization	Nucleus, nuclear pore complex . Nucleus membrane ; Single-pass membrane protein . Endoplasmic reticulum membrane ; Single-pass membrane protein . Stably associated with the NPC throughout interphase and the endoplasmic reticulum during metaphase. .
Purification	The antibody was affinity-purified from rabbit antiserum by affinity-chromatography using epitope-specific immunogen.
Clonality	Polyclonal
Concentration	1 mg/ml
Observed band	125kD
Human Gene ID	9883
Human Swiss-Prot Number	Q96HA1/A6NF01/A8CG34
Alternative Names	POM121; KIAA0618; NUP121; POM121A; Nuclear envelope pore membrane protein POM 121; Nuclear

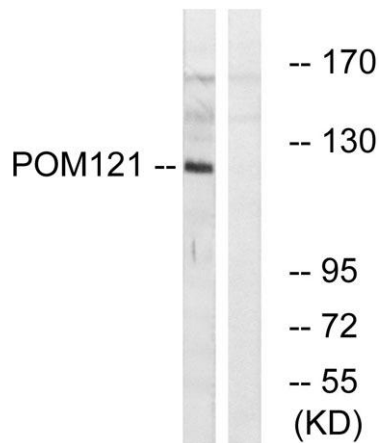
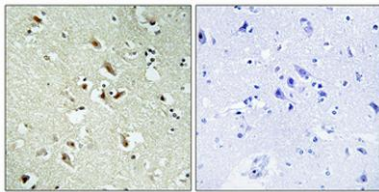


## Background

envelope pore membrane protein POM 121A; Nucleoporin Nup121; Pore membrane protein of 121 kDa; POM121B; Putative nuclear envelope pore membrane prote

This gene encodes a transmembrane protein that localizes to the inner nuclear membrane and forms a core component of the nuclear pore complex, which mediates transport to and from the nucleus. The encoded protein may anchor this complex to the nuclear envelope. There are multiple related genes and pseudogenes for this gene on chromosomes 5, 7, 15, and 22. Alternatively spliced transcript variants encoding different isoforms have been observed. [provided by RefSeq, Jul 2013],

Immunohistochemical analysis of paraffin-embedded Human brain. Antibody was diluted at 1:100(4° overnight). High-pressure and temperature Tris-EDTA,pH8.0 was used for antigen retrieval. Negative contrl (right) obtained from antibody was pre-absorbed by i

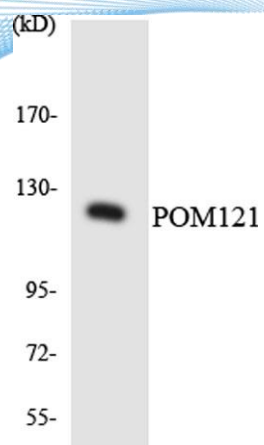


Western blot analysis of lysates from K562 cells, using POM121 Antibody. The lane on the right is blocked with the synthesized peptide.





**ELK Biotechnology**



Western blot analysis of the lysates from HUVEC cells using POM121 antibody.



+86-27-59760950

[ELKbio@ELKbiotech.com](mailto:ELKbio@ELKbiotech.com)

[www.elkbiotech.com](http://www.elkbiotech.com)

23-2, No.388 Gaoxin 2nd Road, Wuhan East Lake Hi-tech Development Zone, Hubei, P.R.C.