



p164-RhoGEF rabbit pAb

Cat No.:ES8102

For research use only

Overview

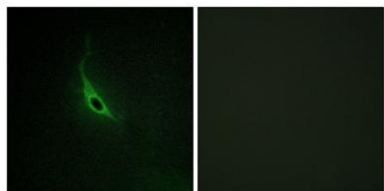
| | |
|--------------------------|---|
| Product Name | p164-RhoGEF rabbit pAb |
| Host species | Rabbit |
| Applications | IHC;IF;ELISA |
| Species Cross-Reactivity | Human;Mouse |
| Recommended dilutions | Immunohistochemistry: 1/100 - 1/300. Immunofluorescence: 1/200 - 1/1000. ELISA: 1/5000. Not yet tested in other applications. |
| Immunogen | The antiserum was produced against synthesized peptide derived from human ARHGEF17. AA range:431-480 |
| Specificity | p164-RhoGEF Polyclonal Antibody detects endogenous levels of p164-RhoGEF protein. |
| Formulation | Liquid in PBS containing 50% glycerol, 0.5% BSA and 0.02% sodium azide. |
| Storage | Store at -20°C. Avoid repeated freeze-thaw cycles. |
| Protein Name | Rho guanine nucleotide exchange factor 17 |
| Gene Name | ARHGEF17 |
| Cellular localization | cytosol, |
| Purification | The antibody was affinity-purified from rabbit antiserum by affinity-chromatography using epitope-specific immunogen. |
| Clonality | Polyclonal |
| Concentration | 1 mg/ml |
| Observed band | |
| Human Gene ID | 9828 |
| Human Swiss-Prot Number | Q96PE2 |
| Alternative Names | ARHGEF17; KIAA0337; TEM4; Rho guanine nucleotide exchange factor 17; 164 kDa Rho-specific guanine-nucleotide exchange factor; p164-RhoGEF; p164RhoGEF; Tumor endothelial marker 4 |
| Background | function:Acts as guanine nucleotide exchange factor (GEF) for RhoA GTPases.,similarity:Contains 1 DH (DBL-homology) domain.,tissue specificity:Highly |





expressed in the heart.,

Immunofluorescence analysis of HepG2 cells, using CARD6 Antibody diluted at 1:50. The picture on the right is blocked with the synthesized peptide.



Immunohistochemical analysis of paraffin-human heart.

1, Antibody was diluted at 1:200(4° overnight). 2, TRIS-EDTA of pH8.0 was used for antigen retrieval. 3,Secondary antibody was diluted at 1:200(room temperature, 30min). The picture on the right is blocked

