

Centriolin rabbit pAb

Cat No.:ES8094

For research use only

Overview

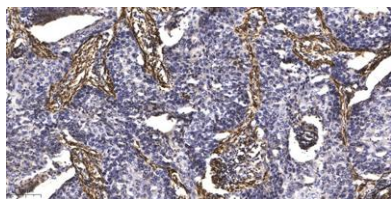
Product Name	Centriolin rabbit pAb
Host species	Rabbit
Applications	IHC;IF;ELISA
Species Cross-Reactivity	Human;Rat;Mouse;
Recommended dilutions	Immunohistochemistry: 1/100 - 1/300. ELISA: 1/40000. Not yet tested in other applications.
Immunogen	The antiserum was produced against synthesized peptide derived from human CEP110. AA range:850-900
Specificity	Centriolin Polyclonal Antibody detects endogenous levels of Centriolin protein.
Formulation	Liquid in PBS containing 50% glycerol, 0.5% BSA and 0.02% sodium azide.
Storage	Store at -20°C. Avoid repeated freeze-thaw cycles.
Protein Name	Centriolar coiled-coil protein of 110 kDa
Gene Name	CCP110
Cellular localization	Cytoplasm, cytoskeleton, microtubule organizing center, centrosome, centriole . Cytoplasm, cytoskeleton, microtubule organizing center, centrosome . Cytoplasm, cytoskeleton, cilium basal body . Recruited early and then associates with the growing distal t
Purification	The antibody was affinity-purified from rabbit antiserum by affinity-chromatography using epitope-specific immunogen.
Clonality	Polyclonal
Concentration	1 mg/ml
Observed band	
Human Gene ID	9738
Human Swiss-Prot Number	O43303
Alternative Names	CCP110; CEP110; CP110; KIAA0419; Centriolar coiled-coil protein of 110 kDa; Centrosomal protein of 110 kDa; CP110; Cep110





Background

function: Necessary for centrosome duplication. Collaborates with CEP97, being involved in the suppression of a cilia assembly program. Required for correct spindle formation and has a role in regulating cytokinesis and genome stability via cooperation with CALM1 and CETN2., induction: Up-regulated during the transition from G1 to S phase of the cell cycle. The highest levels are observed in S phase, after which the levels decrease markedly., PTM: Phosphorylated by CDKs., subunit: Interacts with CALM1, CETN2 and CEP97., tissue specificity: Highly expressed in testis. Detected at intermediate levels in spleen, thymus, prostate, small intestine, colon and peripheral blood leukocytes.,



Immunohistochemical analysis of paraffin-embedded human Squamous cell carcinoma of lung. 1, Antibody was diluted at 1:200(4° overnight). 2, Tris-EDTA, pH9.0 was used for antigen retrieval. 3, Secondary antibody was diluted at 1:200(room temperature, 45min).

