

RIN1 rabbit pAb

Cat No.:ES8073

For research use only

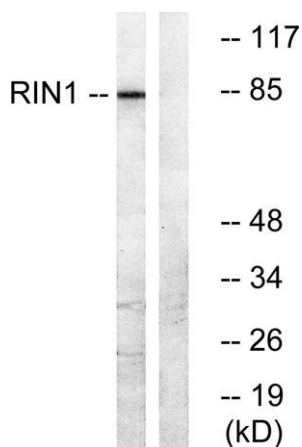
Overview

| | |
|--------------------------|---|
| Product Name | RIN1 rabbit pAb |
| Host species | Rabbit |
| Applications | WB;ELISA;IHC |
| Species Cross-Reactivity | Human;Mouse;Rat |
| Recommended dilutions | WB 1:500-2000;IHC-p 1:50-300; ELISA 2000-20000 |
| Immunogen | The antiserum was produced against synthesized peptide derived from human RIN1. AA range:655-704 |
| Specificity | RIN1 Polyclonal Antibody detects endogenous levels of RIN1 protein. |
| Formulation | Liquid in PBS containing 50% glycerol, 0.5% BSA and 0.02% sodium azide. |
| Storage | Store at -20°C. Avoid repeated freeze-thaw cycles. |
| Protein Name | Ras and Rab interactor 1 |
| Gene Name | RIN1 |
| Cellular localization | Cytoplasm . Membrane . Cytoplasm, cytoskeleton . Some amount is membrane-associated. |
| Purification | The antibody was affinity-purified from rabbit antiserum by affinity-chromatography using epitope-specific immunogen. |
| Clonality | Polyclonal |
| Concentration | 1 mg/ml |
| Observed band | 84kD |
| Human Gene ID | 9610 |
| Human Swiss-Prot Number | Q13671 |
| Alternative Names | RIN1; Ras and Rab interactor 1; Ras inhibitor JC99; Ras interaction/interference protein 1 |
| Background | function:Ras effector protein, which may serve as an inhibitory modulator of neuronal plasticity in aversive memory formation. Can affect Ras signaling at different levels. First, by competing with RAF1 protein for binding to activated Ras. Second, by enhancing signaling from ABL1 and ABL2, which |





regulate cytoskeletal remodeling. Third, by activating RAB5A, possibly by functioning as a guanine nucleotide exchange factor (GEF) for RAB5A, by exchanging bound GDP for free GTP, and facilitating Ras-activated receptor endocytosis.,PTM:Phosphorylated on tyrosine residues by ABL1 and ABL2. Phosphorylated on Ser-351 by PKD.,similarity:Belongs to the RIN (Ras interaction/interference) family.,similarity:Contains 1 Ras-associating domain.,similarity:Contains 1 SH2 domain.,similarity:Contains 1 VPS9 domain.,subcellular location:Some amount is membrane-associated.,subunit:Interacts with the GTP-bound form of Ras proteins (NRAS, HRAS and KRAS). This interaction prevents the association between RAF1 and Ras. Interacts with 14-3-3 proteins YWHAB, YWHAЕ and YWHAZ when phosphorylated on Ser-351. Interacts with the SH3 domain of ABL1 and ABL2. Interacts with RAB5A. The interaction with Ras is probably regulated and antagonized by the interaction with 14-3-3 proteins. The interaction with 14-3-3 proteins is regulated by phosphorylation on Ser-351.,tissue specificity:Expressed in all tissues examined with high levels in brain, placenta and pancreas.,

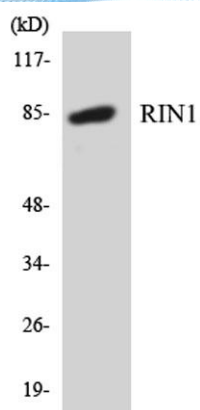


Western blot analysis of lysates from K562 cells, using RIN1 Antibody. The lane on the right is blocked with the synthesized peptide.





ELK Biotechnology



Western blot analysis of the lysates from COLO205 cells using RIN1 antibody.



Immunohistochemical analysis of paraffin-embedded human tonsil. 1, Antibody was diluted at 1:200(4° overnight). 2, Tris-EDTA,pH9.0 was used for antigen retrieval. 3,Secondary antibody was diluted at 1:200(room temperature, 45min).



+86-27-59760950

ELKbio@ELKbiotech.com

www.elkbiotech.com

23-2, No.388 Gaoxin 2nd Road,Wuhan East Lake Hi-tech Development Zone, Hubei , P.R.C