

# MAD2L1BP rabbit pAb

Cat No.:ES8069

For research use only

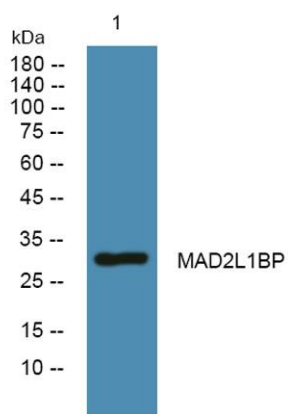
## Overview

Product Name	MAD2L1BP rabbit pAb
Host species	Rabbit
Applications	WB;ELISA
Species Cross-Reactivity	Human;Rat;Mouse;
Recommended dilutions	Western Blot: 1/500 - 1/2000. ELISA: 1/10000. Not yet tested in other applications.
Immunogen	Synthesized peptide derived from MAD2L1BP . at AA range: 10-90
Specificity	MAD2L1BP Polyclonal Antibody detects endogenous levels of MAD2L1BP protein.
Formulation	Liquid in PBS containing 50% glycerol, 0.5% BSA and 0.02% sodium azide.
Storage	Store at -20°C. Avoid repeated freeze-thaw cycles.
Protein Name	MAD2L1-binding protein
Gene Name	MAD2L1BP
Cellular localization	Nucleus. Cytoplasm, cytoskeleton, spindle. During early mitosis, unevenly distributed throughout the nucleoplasm. From metaphase to anaphase, concentrated on the spindle.
Purification	The antibody was affinity-purified from rabbit antiserum by affinity-chromatography using epitope-specific immunogen.
Clonality	Polyclonal
Concentration	1 mg/ml
Observed band	31kD
Human Gene ID	9587
Human Swiss-Prot Number	Q15013
Alternative Names	MAD2L1BP; CMT2; KIAA0110; MAD2L1-binding protein; Caught by MAD2 protein
Background	The protein encoded by this gene was identified as a binding protein of the MAD2 mitotic arrest deficient-like 1 (MAD2/MAD2L1). MAD2 is a key component of the spindle checkpoint that delays





the onset of anaphase until all the kinetochores are attached to the spindle. This protein may interact with the spindle checkpoint and coordinate cell cycle events in late mitosis. Alternatively spliced transcript variants encoding distinct isoforms have been observed. [provided by RefSeq, Jul 2008],



Western blot analysis of lysates from SH-SY5Y cells, primary antibody was diluted at 1:1000, 4° over night

