



MPP1 rabbit pAb

Cat No.:ES8068

For research use only

Overview

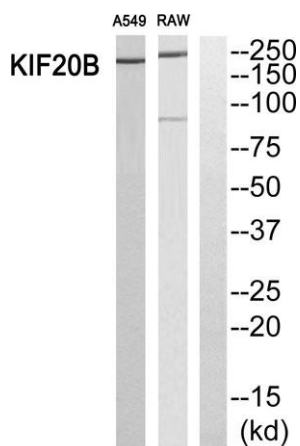
Product Name	MPP1 rabbit pAb
Host species	Rabbit
Applications	IF;ELISA;IHC
Species Cross-Reactivity	Human;Rat;Mouse;
Recommended dilutions	IF/ICC 1:50-300; ELISA 1:2000-20000; IHC-p 1:50-200
Immunogen	The antiserum was produced against synthesized peptide derived from human KIF20B. AA range:1771-1820
Specificity	MPP1 Polyclonal Antibody detects endogenous levels of MPP1 protein.
Formulation	Liquid in PBS containing 50% glycerol, 0.5% BSA and 0.02% sodium azide.
Storage	Store at -20°C. Avoid repeated freeze-thaw cycles.
Protein Name	Kinesin-like protein KIF20B
Gene Name	KIF20B
Cellular localization	Nucleus . Cytoplasm, cytoskeleton, microtubule organizing center, centrosome . Nucleus, nucleolus . Nucleus, nucleoplasm . Cytoplasm, cytoskeleton, spindle . Cytoplasm, cytoskeleton, spindle pole . Midbody . Cell projection, axon . Cell projection, growth
Purification	The antibody was affinity-purified from rabbit antiserum by affinity-chromatography using epitope-specific immunogen.
Clonality	Polyclonal
Concentration	1 mg/ml
Observed band	210kD
Human Gene ID	9585
Human Swiss-Prot Number	Q96Q89
Alternative Names	KIF20B; KRMP1; MPHOSPH1; Kinesin-like protein KIF20B; Cancer/testis antigen 90; CT90; Kinesin-related motor interacting with PIN1; M-phase phosphoprotein 1; MPP1



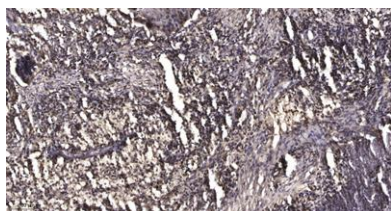


Background

KIF20B (Kinesin Family Member 20B) is a Protein Coding gene. Among its related pathways are Golgi-to-ER retrograde transport and Factors involved in megakaryocyte development and platelet production. GO annotations related to this gene include ATPase activity and microtubule motor activity. An important paralog of this gene is KIF23.



Western blot analysis of KIF20B Antibody. The lane on the right is blocked with the KIF20B peptide.



Immunohistochemical analysis of paraffin-embedded human Squamous cell carcinoma of lung. 1, Antibody was diluted at 1:200(4° overnight). 2, Tris-EDTA,pH9.0 was used for antigen retrieval. 3,Secondary antibody was diluted at 1:200(room temperature, 45min).

