

# Neuralized-1 rabbit pAb

Cat No.:ES7969

For research use only

## Overview

Product Name	Neuralized-1 rabbit pAb
Host species	Rabbit
Applications	WB;IHC;IF;ELISA
Species Cross-Reactivity	Human;Rat;Mouse;
Recommended dilutions	Western Blot: 1/500 - 1/2000. Immunohistochemistry: 1/100 - 1/300. ELISA: 1/40000. Not yet tested in other applications.
Immunogen	The antiserum was produced against synthesized peptide derived from human NEURL1. AA range:219-268
Specificity	Neuralized-1 Polyclonal Antibody detects endogenous levels of Neuralized-1 protein.
Formulation	Liquid in PBS containing 50% glycerol, 0.5% BSA and 0.02% sodium azide.
Storage	Store at -20°C. Avoid repeated freeze-thaw cycles.
Protein Name	Neuralized-like protein 1A
Gene Name	NEURL
Cellular localization	Cytoplasm, perinuclear region . Cell membrane ; Peripheral membrane protein . Perikaryon . Cell projection, dendrite . Cell junction, synapse, postsynaptic density . Localized in the cell bodies of the pyramidal neurons and distributed along their apical
Purification	The antibody was affinity-purified from rabbit antiserum by affinity-chromatography using epitope-specific immunogen.
Clonality	Polyclonal
Concentration	1 mg/ml
Observed band	62kD
Human Gene ID	9148
Human Swiss-Prot Number	O76050
Alternative Names	NEURL; NEURL1; NEURL1A; RNF67; Neuralized-like protein 1A; h-neu; h-neuralized 1; RING finger



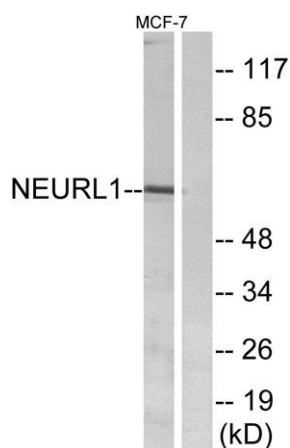
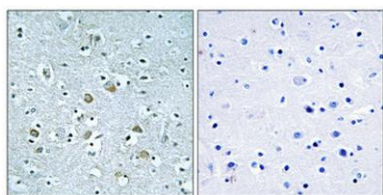


## Background

### protein 67

NEURL1B (neuralized homolog 1B), also known as neur2 or NEURL3, is a 555 amino acid protein that functions as an E3 ubiquitin-protein ligase. Involved in protein ubiquitination, NEURL1B contains two NHR (neuralized homology repeat) domains and one RING-type zinc finger. NEURL4 (neuralized homolog 4 (Drosophila)), also known as neuralized-like protein 4, is a 1,562 amino acid protein that is highly expressed in a wide variety of tissues. Containing six NHR (neuralized homology repeat) domains, NEURL4 exists as two alternatively spliced isoforms that are encoded by a gene that maps to human chromosome 17p13.1.

Immunohistochemical analysis of paraffin-embedded Human brain. Antibody was diluted at 1:100(4° overnight). High-pressure and temperature Tris-EDTA,pH8.0 was used for antigen retrieval. Negative ctrl (right) obtained from antibody was pre-absorbed by i



Western blot analysis of lysates from MCF-7 cells, using NEURL1 Antibody. The lane on the right is blocked with the synthesized peptide.

