



ATPBD3 rabbit pAb

Cat No.:ES7936

For research use only

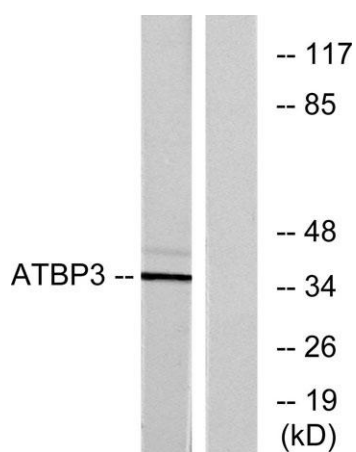
Overview

Product Name	ATPBD3 rabbit pAb
Host species	Rabbit
Applications	WB;ELISA
Species Cross-Reactivity	Human;Rat;Mouse;
Recommended dilutions	Western Blot: 1/500 - 1/2000. ELISA: 1/20000. Not yet tested in other applications.
Immunogen	The antiserum was produced against synthesized peptide derived from human ATPBD3. AA range:291-340
Specificity	ATPBD3 Polyclonal Antibody detects endogenous levels of ATPBD3 protein.
Formulation	Liquid in PBS containing 50% glycerol, 0.5% BSA and 0.02% sodium azide.
Storage	Store at -20°C. Avoid repeated freeze-thaw cycles.
Protein Name	Cytoplasmic tRNA 2-thiolation protein 1
Gene Name	CTU1
Cellular localization	Cytoplasm.
Purification	The antibody was affinity-purified from rabbit antiserum by affinity-chromatography using epitope-specific immunogen.
Clonality	Polyclonal
Concentration	1 mg/ml
Observed band	36kD
Human Gene ID	90353
Human Swiss-Prot Number	Q7Z7A3
Alternative Names	CTU1; ATPBD3; NCS6; Cytoplasmic tRNA 2-thiolation protein 1; ATP-binding domain-containing protein 3; Cancer-associated gene protein; Cytoplasmic tRNA adenylyltransferase 1
Background	function:Plays a central role in 2-thiolation of mcm(5)S(2)U at tRNA wobble positions of tRNA(Lys), tRNA(Glu) and tRNA(Gln). Directly binds tRNAs and probably acts by catalyzing adenylation of tRNAs, an

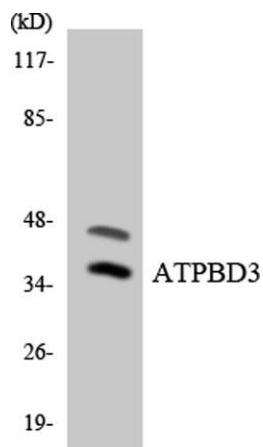




intermediate required for 2-thiolation. It is unclear whether it acts as a sulfurtransferase that transfers sulfur from thiocarboxylated URM1 onto the uridine of tRNAs at wobble position.,pathway:tRNA modification;
5-methoxycarbonylmethyl-2-thiouridine-tRNA biosynthesis.,similarity:Belongs to the ttcA family. CTU1/NCS6/ATPBD3 subfamily.,subunit:Component of a complex at least composed of URM1, CTU2/NCS2 and ATPBD3/NCS6. May for a heterodimer with CTU2/NCS2.,



Western blot analysis of lysates from LOVO cells, using ATPBD3 Antibody. The lane on the right is blocked with the synthesized peptide.



Western blot analysis of the lysates from 293 cells using ATPBD3 antibody.

