

# MSK2 (phospho Thr568) rabbit pAb

Cat No.:ES7924

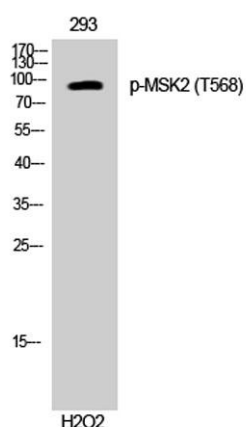
For research use only

## Overview

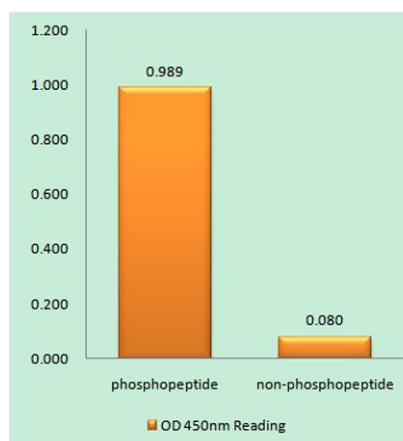
Product Name	MSK2 (phospho Thr568) rabbit pAb
Host species	Rabbit
Applications	WB;IHC;IF;ELISA
Species Cross-Reactivity	Human;Mouse
Recommended dilutions	Western Blot: 1/500 - 1/2000. Immunohistochemistry: 1/100 - 1/300. ELISA: 1/40000. Not yet tested in other applications.
Immunogen	The antiserum was produced against synthesized peptide derived from human MSK2 around the phosphorylation site of Thr568. AA range:531-580
Specificity	Phospho-MSK2 (T568) Polyclonal Antibody detects endogenous levels of MSK2 protein only when phosphorylated at T568.
Formulation	Liquid in PBS containing 50% glycerol, 0.5% BSA and 0.02% sodium azide.
Storage	Store at -20°C. Avoid repeated freeze-thaw cycles.
Protein Name	Ribosomal protein S6 kinase alpha-4
Gene Name	RPS6KA4
Cellular localization	Nucleus .
Purification	The antibody was affinity-purified from rabbit antiserum by affinity-chromatography using epitope-specific immunogen.
Clonality	Polyclonal
Concentration	1 mg/ml
Observed band	95kD
Human Gene ID	8986
Human Swiss-Prot Number	O75676
Alternative Names	RPS6KA4; MSK2; Ribosomal protein S6 kinase alpha-4; S6K-alpha-4; 90 kDa ribosomal protein S6 kinase 4; Nuclear mitogen- and stress-activated protein kinase 2; Ribosomal protein kinase B; RSKB ribosomal protein S6 kinase A4(RPS6KA4) Homo sapiens This gene encodes a member of the RSK
Background	



(ribosomal S6 kinase) family of serine/threonine kinases. This kinase contains 2 non-identical kinase catalytic domains and phosphorylates various substrates, including CREB1 and ATF1. The encoded protein can also phosphorylate histone H3 to regulate certain inflammatory genes. Several transcript variants encoding different isoforms have been found for this gene. [provided by RefSeq, Jan 2016],

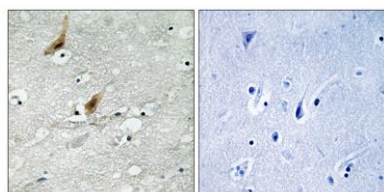


Western Blot analysis of 293 cells using Phospho-MSK2 (T568) Polyclonal Antibody cells nucleus extracted by Minute TM Cytoplasmic and Nuclear Fractionation kit (SC-003, Inventbiotech, MN, USA).



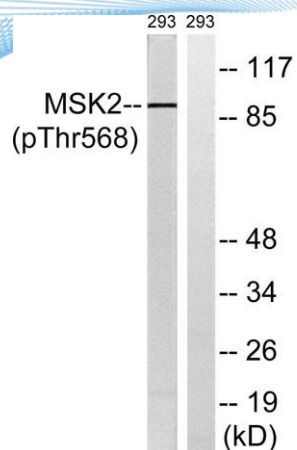
Enzyme-Linked Immunosorbent Assay (Phospho-ELISA) for Immunogen Phosphopeptide (Phospho-left) and Non-Phosphopeptide (Phospho-right), using MSK2 (Phospho-Thr568) Antibody

Immunohistochemistry analysis of paraffin-embedded human brain, using MSK2 (Phospho-Thr568) Antibody. The picture on the right is blocked with the phospho peptide.





**ELK Biotechnology**



Western blot analysis of lysates from 293 cells treated with H<sub>2</sub>O<sub>2</sub> 100uM 15', using MSK2 (Phospho-Thr568) Antibody. The lane on the right is blocked with the phospho peptide.



+86-27-59760950

ELKbio@ELKbiotech.com

[www.elkbiotech.com](http://www.elkbiotech.com)

23-2, No.388 Gaoxin 2nd Road,Wuhan East Lake Hi-tech Development Zone, Hubei , P.R.C