

β -1,3-Gal-T2 rabbit pAb

Cat No.:ES7863

For research use only

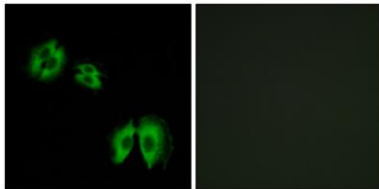
Overview

Product Name	β -1,3-Gal-T2 rabbit pAb
Host species	Rabbit
Applications	IHC;IF;ELISA
Species Cross-Reactivity	Human;Mouse
Recommended dilutions	Immunohistochemistry: 1/100 - 1/300. Immunofluorescence: 1/200 - 1/1000. ELISA: 1/40000. Not yet tested in other applications.
Immunogen	The antiserum was produced against synthesized peptide derived from human B3GALT2. AA range:373-422
Specificity	β -1,3-Gal-T2 Polyclonal Antibody detects endogenous levels of β -1,3-Gal-T2 protein.
Formulation	Liquid in PBS containing 50% glycerol, 0.5% BSA and 0.02% sodium azide.
Storage	Store at -20°C. Avoid repeated freeze-thaw cycles.
Protein Name	Beta-1,3-galactosyltransferase 2
Gene Name	B3GALT2
Cellular localization	Golgi apparatus membrane ; Single-pass type II membrane protein .
Purification	The antibody was affinity-purified from rabbit antiserum by affinity-chromatography using epitope-specific immunogen.
Clonality	Polyclonal
Concentration	1 mg/ml
Observed band	
Human Gene ID	8707
Human Swiss-Prot Number	O43825
Alternative Names	B3GALT2; Beta-1; 3-galactosyltransferase 2; Beta-1,3-GalTase 2; Beta3Gal-T2; Beta3GalT2; UDP-galactose:2-acetamido-2-deoxy-D-glucose 3beta-galactosyltransferase 2
Background	This gene is a member of the beta-1,3-galactosyltransferase (beta3GalT) gene



family. This family encodes type II membrane-bound glycoproteins with diverse enzymatic functions using different donor substrates (UDP-galactose and UDP-N-acetylglucosamine) and different acceptor sugars (N-acetylglucosamine, galactose, N-acetylgalactosamine). The beta3GalT genes are distantly related to the *Drosophila* Brainiac gene and have the protein coding sequence contained in a single exon. The beta3GalT proteins also contain conserved sequences not found in the beta4GalT or alpha3GalT proteins. The carbohydrate chains synthesized by these enzymes are designated as type 1, whereas beta4GalT enzymes synthesize type 2 carbohydrate chains. The ratio of type 1:type 2 chains changes during embryogenesis. By sequence similarity, the beta3GalT genes fall into at least two groups: beta3GalT4 and 4 other beta3

Immunofluorescence analysis of A549 cells, using B3GALT2 Antibody. The picture on the right is blocked with the synthesized peptide.



Immunohistochemistry analysis of paraffin-embedded human heart tissue, using B3GALT2 Antibody. The picture on the right is blocked with the synthesized peptide.

