

# Actinin- $\alpha$ 1 rabbit pAb

Cat No.:ES7860

For research use only

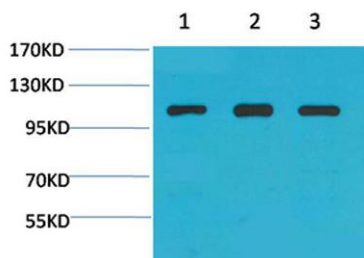
## Overview

Product Name	Actinin- $\alpha$ 1 rabbit pAb
Host species	Rabbit
Applications	WB;ELISA
Species Cross-Reactivity	Human;Mouse;Rat
Recommended dilutions	Western Blot: 1/500 - 1/2000. ELISA: 1/40000. Not yet tested in other applications.
Immunogen	Synthesized peptide derived from Actinin- $\alpha$ 1 . at AA range: 1-80
Specificity	Actinin- $\alpha$ 1 Polyclonal Antibody detects endogenous levels of Actinin- $\alpha$ 1 protein.
Formulation	Liquid in PBS containing 50% glycerol, 0.5% BSA and 0.02% sodium azide.
Storage	Store at -20°C. Avoid repeated freeze-thaw cycles.
Protein Name	Alpha-actinin-1
Gene Name	ACTN1
Cellular localization	Cytoplasm, cytoskeleton . Cytoplasm, myofibril, sarcomere, Z line . Cell membrane . Cell junction . Cell projection, ruffle . Colocalizes with MYO22 and PPP3CA at the Z-line of heart and skeletal muscle. Colocalizes with PSD in membrane ruffles and centra
Purification	The antibody was affinity-purified from rabbit antiserum by affinity-chromatography using epitope-specific immunogen.
Clonality	Polyclonal
Concentration	1 mg/ml
Observed band	103kD
Human Gene ID	87
Human Swiss-Prot Number	P12814
Alternative Names	ACTN1; Alpha-actinin-1; Alpha-actinin cytoskeletal isoform; F-actin cross-linking protein; Non-muscle alpha-actinin-1
Background	Alpha actinins belong to the spectrin gene superfamily which represents a diverse group of



cytoskeletal proteins, including the alpha and beta spectrins and dystrophins. Alpha actinin is an actin-binding protein with multiple roles in different cell types. In nonmuscle cells, the cytoskeletal isoform is found along microfilament bundles and adherens-type junctions, where it is involved in binding actin to the membrane. In contrast, skeletal, cardiac, and smooth muscle isoforms are localized to the Z-disc and analogous dense bodies, where they help anchor the myofibrillar actin filaments. This gene encodes a nonmuscle, cytoskeletal, alpha actinin isoform and maps to the same site as the structurally similar erythroid beta spectrin gene. Three transcript variants encoding different isoforms have been found for this gene. [provided by RefSeq, Jul 2008],

Western blot analysis of 1) 3T3, 2) PC12, 3) Rat Heart Tissue using Actinin- $\alpha$ 1 Polyclonal Antibody. Secondary antibody(catalog#:RS0002) was diluted at 1:20000



Immunohistochemical analysis of paraffin-embedded Mouse Kidney Tissue using Actinin- $\alpha$ 1 Polyclonal Antibody.

