



# TEF-4 rabbit pAb

Cat No.:ES7767

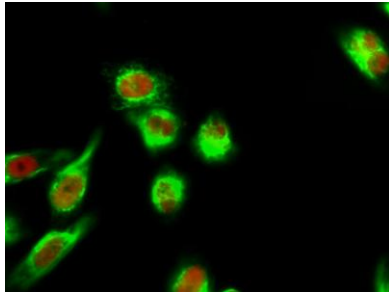
For research use only

## Overview

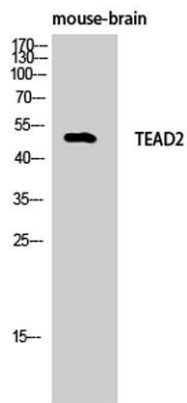
Product Name	TEF-4 rabbit pAb
Host species	Rabbit
Applications	WB;IHC;IF;ELISA
Species Cross-Reactivity	Human;Mouse
Recommended dilutions	Immunohistochemistry: 1/100 - 1/300. Immunofluorescence: 1/200 - 1/1000. ELISA: 1/20000. Not yet tested in other applications.
Immunogen	The antiserum was produced against synthesized peptide derived from human TEAD2. AA range:71-120
Specificity	TEF-4 Polyclonal Antibody detects endogenous levels of TEF-4 protein.
Formulation	Liquid in PBS containing 50% glycerol, 0.5% BSA and 0.02% sodium azide.
Storage	Store at -20°C. Avoid repeated freeze-thaw cycles.
Protein Name	Transcriptional enhancer factor TEF-4
Gene Name	TEAD2
Cellular localization	Nucleus.
Purification	The antibody was affinity-purified from rabbit antiserum by affinity-chromatography using epitope-specific immunogen.
Clonality	Polyclonal
Concentration	1 mg/ml
Observed band	
Human Gene ID	8463
Human Swiss-Prot Number	Q15562
Alternative Names	TEAD2; TEF4; Transcriptional enhancer factor TEF-4; TEA domain family member 2; TEAD-2
Background	function:Putative transcription factor that binds to the SPH and GT-IIC "enhansons" (5'-GTGGAATGT-3'). May be involved in the gene regulation of neural development. Binds to the M-CAT motif.,similarity:Contains 1 TEA DNA-binding



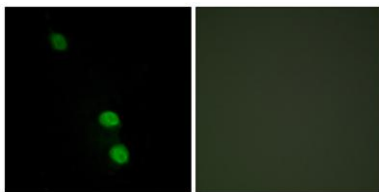
domain.,



Immunofluorescence analysis of HeLa cell. 1,TEF-4 Polyclonal Antibody(red) was diluted at 1:200(4° overnight). β-actin Monoclonal Antibody(5B7)(green) was diluted at 1:200(4° overnight). 2, Goat Anti Rabbit Alexa Fluor 594 Catalog:RS3611 was diluted at 1:



Western Blot analysis of mouse-brain cells using TEF-4 Polyclonal Antibody cells nucleus extracted by Minute TM Cytoplasmic and Nuclear Fractionation kit (SC-003,Inventbiotech,MN,USA).



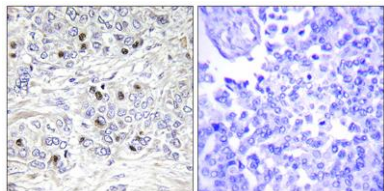
Immunofluorescence analysis of HepG2 cells, using TEAD2 Antibody. The picture on the right is blocked with the synthesized peptide.





**ELK Biotechnology**

Immunohistochemistry analysis of paraffin-embedded human breast carcinoma tissue, using TEAD2 Antibody. The picture on the right is blocked with the synthesized peptide.



+86-27-59760950

[ELKbio@ELKbiotech.com](mailto:ELKbio@ELKbiotech.com)

[www.elkbiotech.com](http://www.elkbiotech.com)

23-2, No.388 Gaoxin 2nd Road,Wuhan East Lake Hi-tech Development Zone, Hubei , P.R.C