

NIFK (phospho Thr234) rabbit pAb

Cat No.:ES7753

For research use only

Overview

Product Name	NIFK (phospho Thr234) rabbit pAb
Host species	Rabbit
Applications	IHC;IF;ELISA
Species Cross-Reactivity	Human;Mouse
Recommended dilutions	Immunohistochemistry: 1/100 - 1/300. Immunofluorescence: 1/200 - 1/1000. ELISA: 1/40000. Not yet tested in other applications.
Immunogen	The antiserum was produced against synthesized peptide derived from human NIFK around the phosphorylation site of Thr234. AA range:200-249
Specificity	Phospho-NIFK (T234) Polyclonal Antibody detects endogenous levels of NIFK protein only when phosphorylated at T234.
Formulation	Liquid in PBS containing 50% glycerol, 0.5% BSA and 0.02% sodium azide.
Storage	Store at -20°C. Avoid repeated freeze-thaw cycles.
Protein Name	MKI67 FHA domain-interacting nucleolar phosphoprotein
Gene Name	MKI67IP
Cellular localization	Nucleus, nucleolus. Chromosome. Localizes to mitotic chromosomes in conjunction with MKI67.
Purification	The antibody was affinity-purified from rabbit antiserum by affinity-chromatography using epitope-specific immunogen.
Clonality	Polyclonal
Concentration	1 mg/ml
Observed band	
Human Gene ID	84365
Human Swiss-Prot Number	Q9BYG3
Alternative Names	MKI67IP; NIFK; NOPP34; MKI67 FHA domain-interacting nucleolar phosphoprotein; Nucleolar phosphoprotein Nopp34; Nucleolar protein interacting with the FHA domain of pKI-67;

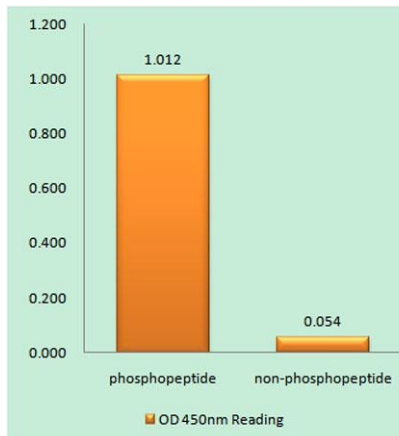
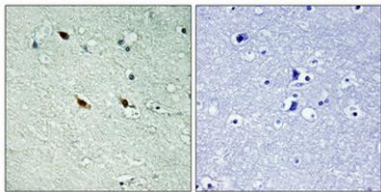


Background

hNIFK

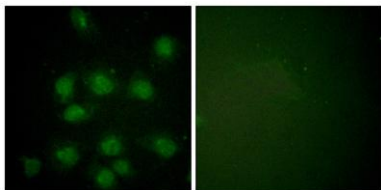
This gene encodes a protein that interacts with the forkhead-associated domain of the Ki-67 antigen. The encoded protein may bind RNA and may play a role in mitosis and cell cycle progression. Multiple pseudogenes exist on chromosomes 5, 10, 12, 15, and 19.[provided by RefSeq, Jan 2009],

Immunohistochemical analysis of paraffin-embedded Human brain. Antibody was diluted at 1:100(4° overnight). High-pressure and temperature Tris-EDTA,pH8.0 was used for antigen retrieval. Negative contrl (right) obtained from antibody was pre-absorbed by i



Enzyme-Linked Immunosorbent Assay (Phospho-ELISA) for Immunogen Phosphopeptide (Phospho-left) and Non-Phosphopeptide (Phospho-right), using NIFK (Phospho-Thr234) Antibody

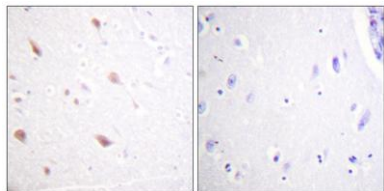
Immunofluorescence analysis of HUVEC cells, using NIFK (Phospho-Thr234) Antibody. The picture on the right is blocked with the phospho peptide.





ELK Biotechnology

Immunohistochemistry analysis of paraffin-embedded human brain, using NIFK (Phospho-Thr234) Antibody. The picture on the right is blocked with the phospho peptide.



+86-27-59760950

ELKbio@ELKbiotech.com

www.elkbiotech.com

23-2, No.388 Gaoxin 2nd Road, Wuhan East Lake Hi-tech Development Zone, Hubei, P.R.C.