

Caspase-6 (phospho Ser257) rabbit pAb

Cat No.:ES7718

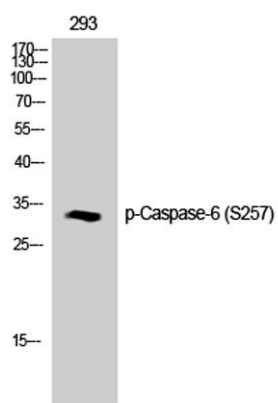
For research use only

Overview

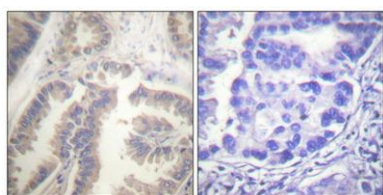
Product Name	Caspase-6 (phospho Ser257) rabbit pAb
Host species	Rabbit
Applications	WB;IHC;IF;ELISA
Species Cross-Reactivity	Human;Mouse;Rat
Recommended dilutions	Western Blot: 1/500 - 1/2000. Immunohistochemistry: 1/100 - 1/300. Immunofluorescence: 1/200 - 1/1000. ELISA: 1/20000. Not yet tested in other applications.
Immunogen	The antiserum was produced against synthesized peptide derived from human Caspase 6 around the phosphorylation site of Ser257. AA range:223-272
Specificity	Phospho-Caspase-6 (S257) Polyclonal Antibody detects endogenous levels of Caspase-6 protein only when phosphorylated at S257.
Formulation	Liquid in PBS containing 50% glycerol, 0.5% BSA and 0.02% sodium azide.
Storage	Store at -20°C. Avoid repeated freeze-thaw cycles.
Protein Name	Caspase6
Gene Name	CASP6
Cellular localization	Cytoplasm . Nucleus .
Purification	The antibody was affinity-purified from rabbit antiserum by affinity-chromatography using epitope-specific immunogen.
Clonality	Polyclonal
Concentration	1 mg/ml
Observed band	15,30kD
Human Gene ID	839
Human Swiss-Prot Number	P55212
Alternative Names	CASP6; MCH2; Caspase-6; CASP-6; Apoptotic protease Mch-2
Background	This gene encodes a member of the cysteine-aspartic acid protease (caspase) family of enzymes. Sequential activation of caspases plays a



central role in the execution-phase of cell apoptosis. Caspases exist as inactive proenzymes which undergo proteolytic processing at conserved aspartic acid residues to produce two subunits, large and small, that dimerize to form the active enzyme. This protein is processed by caspases 7, 8 and 10, and is thought to function as a downstream enzyme in the caspase activation cascade. Alternative splicing of this gene results in multiple transcript variants that encode different isoforms. [provided by RefSeq, Oct 2015],



Western Blot analysis of 293T cells using Phospho-Caspase-6 (S257) Polyclonal Antibody diluted at 1:1000



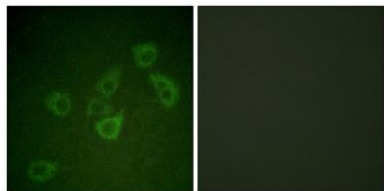
Immunohistochemical analysis of paraffin-embedded Human lung cancer. Antibody was diluted at 1:100(4° overnight). High-pressure and temperature Tris-EDTA,pH8.0 was used for antigen retrieval. Negative contrl (right) obtained from antibody was pre-absorbed by immunogen peptide.



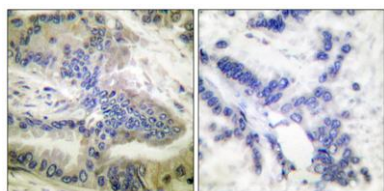


ELK Biotechnology

Immunofluorescence analysis of HUVEC cells, using Caspase 6 (Phospho-Ser257) Antibody. The picture on the right is blocked with the phospho peptide.



Immunohistochemistry analysis of paraffin-embedded human colon carcinoma, using Caspase 6 (Phospho-Ser257) Antibody. The picture on the right is blocked with the phospho peptide.



+86-27-59760950

ELKbio@ELKbiotech.com

www.elkbiotech.com

23-2, No.388 Gaoxin 2nd Road, Wuhan East Lake Hi-tech Development Zone, Hubei, P.R.C.