



Olfactory receptor 11H1/11H2/11H12 rabbit pAb

Cat No.:ES7629

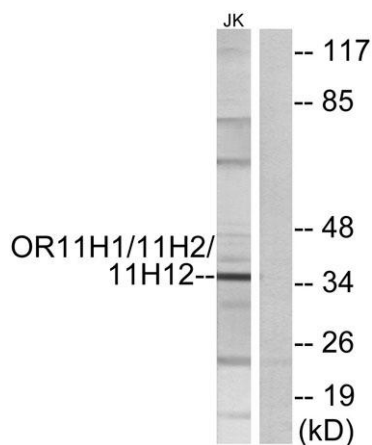
For research use only

Overview

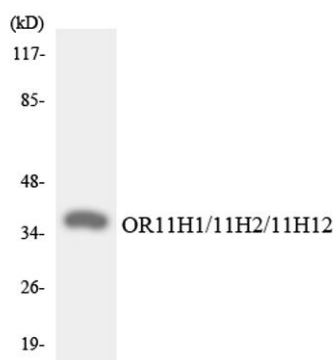
Product Name	Olfactory receptor 11H1/11H2/11H12 rabbit pAb
Host species	Rabbit
Applications	WB;IF;ELISA
Species Cross-Reactivity	Human;Rat;Mouse;
Recommended dilutions	Western Blot: 1/500 - 1/2000. Immunofluorescence: 1/200 - 1/1000. ELISA: 1/20000. Not yet tested in other applications.
Immunogen	The antiserum was produced against synthesized peptide derived from human OR11H1/11H2/11H12. AA range:277-326
Specificity	Olfactory receptor 11H1/11H2/11H12 Polyclonal Antibody detects endogenous levels of Olfactory receptor 11H1/11H2/11H12 protein.
Formulation	Liquid in PBS containing 50% glycerol, 0.5% BSA and 0.02% sodium azide.
Storage	Store at -20°C. Avoid repeated freeze-thaw cycles.
Protein Name	Olfactory receptor 11H12
Gene Name	OR11H12
Cellular localization	Cell membrane; Multi-pass membrane protein.
Purification	The antibody was affinity-purified from rabbit antiserum by affinity-chromatography using epitope-specific immunogen.
Clonality	Polyclonal
Concentration	1 mg/ml
Observed band	35kD
Human Gene ID	81061/440153
Human Swiss-Prot Number	Q8NG94/Q8NH07/B2RN74/Q6IEX0
Alternative Names	OR11H1; Olfactory receptor 11H1; Olfactory receptor OR22-1; OR11H2; C14orf15; OR11H2P; Olfactory receptor 11H2; Olfactory receptor OR14-1; OR11H12; Olfactory receptor 11H12Q6IEX0
Background	Olfactory receptors interact with odorant molecules



in the nose, to initiate a neuronal response that triggers the perception of a smell. The olfactory receptor proteins are members of a large family of G-protein-coupled receptors (GPCR) arising from single coding-exon genes. Olfactory receptors share a 7-transmembrane domain structure with many neurotransmitter and hormone receptors and are responsible for the recognition and G protein-mediated transduction of odorant signals. The olfactory receptor gene family is the largest in the genome. The nomenclature assigned to the olfactory receptor genes and proteins for this organism is independent of other organisms. [provided by RefSeq, Jul 2008],



Western blot analysis of lysates from Jurkat cells, using OR11H1/11H2/11H12 Antibody. The lane on the right is blocked with the synthesized peptide.



Western blot analysis of the lysates from HeLa cells using OR11H1/11H2/11H12 antibody.

