

MKP-7 rabbit pAb

Cat No.:ES7624

For research use only

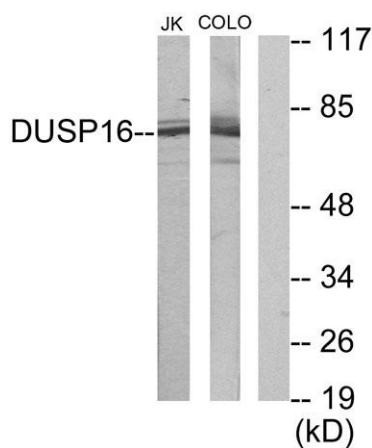
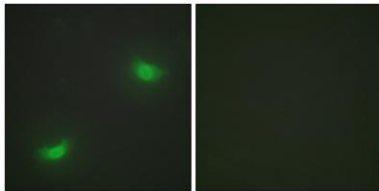
Overview

Product Name	MKP-7 rabbit pAb
Host species	Rabbit
Applications	WB;IHC;IF;ELISA
Species Cross-Reactivity	Human;Mouse
Recommended dilutions	Western Blot: 1/500 - 1/2000. Immunohistochemistry: 1/100 - 1/300. Immunofluorescence: 1/200 - 1/1000. ELISA: 1/10000. Not yet tested in other applications.
Immunogen	The antiserum was produced against synthesized peptide derived from human DUSP16. AA range:571-620
Specificity	MKP-7 Polyclonal Antibody detects endogenous levels of MKP-7 protein.
Formulation	Liquid in PBS containing 50% glycerol, 0.5% BSA and 0.02% sodium azide.
Storage	Store at -20°C. Avoid repeated freeze-thaw cycles.
Protein Name	Dual specificity protein phosphatase 16
Gene Name	DUSP16
Cellular localization	Cytoplasm. Nucleus. Cytoplasmic vesicle. After dissociation upon AGTR stimulation, re-associates with ARRB2 on endocytic vesicles.
Purification	The antibody was affinity-purified from rabbit antiserum by affinity-chromatography using epitope-specific immunogen.
Clonality	Polyclonal
Concentration	1 mg/ml
Observed band	73kD
Human Gene ID	80824
Human Swiss-Prot Number	Q9BY84
Alternative Names	DUSP16; KIAA1700; MKP7; Dual specificity protein phosphatase 16; Mitogen-activated protein kinase phosphatase 7; MAP kinase phosphatase 7; MKP-7 dual specificity phosphatase 16(DUSP16) Homo
Background	



sapiens This gene encodes a mitogen-activated protein kinase phosphatase that is a member of the dual specificity protein phosphatase subfamily. These phosphatases inactivate their target kinases by dephosphorylating both the phosphoserine/threonine and phosphotyrosine residues. The encoded protein specifically regulates the c-Jun amino-terminal kinase (JNK) and extracellular signal-regulated kinase (ERK) pathways.[provided by RefSeq, May 2010],

Immunofluorescence analysis of HepG2 cells, using DUSP16 Antibody. The picture on the right is blocked with the synthesized peptide.

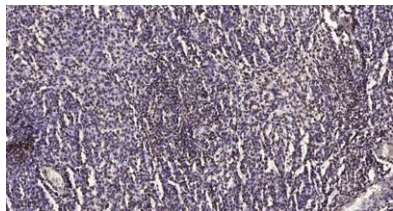


Western blot analysis of lysates from Jurkat and COLO205 cells, using DUSP16 Antibody. The lane on the right is blocked with the synthesized peptide.





ELK Biotechnology



Immunohistochemical analysis of paraffin-embedded human brain tumor. 1, Antibody was diluted at 1:200(4° overnight). 2, Tris-EDTA,pH9.0 was used for antigen retrieval. 3,Secondary antibody was diluted at 1:200(room temperature, 45min).



+86-27-59760950

ELKbio@ELKbiotech.com

www.elkbiotech.com

23-2, No.388 Gaoxin 2nd Road,Wuhan East Lake Hi-tech Development Zone, Hubei , P.R.C