

RASSF7 rabbit pAb

Cat No.:ES7617

For research use only

Overview

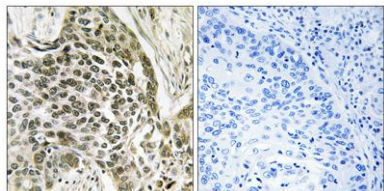
Product Name	RASSF7 rabbit pAb
Host species	Rabbit
Applications	IHC;IF;ELISA
Species Cross-Reactivity	Human;Mouse
Recommended dilutions	Immunohistochemistry: 1/100 - 1/300. ELISA: 1/5000. Not yet tested in other applications.
Immunogen	The antiserum was produced against synthesized peptide derived from human RASSF7. AA range:159-208
Specificity	RASSF7 Polyclonal Antibody detects endogenous levels of RASSF7 protein.
Formulation	Liquid in PBS containing 50% glycerol, 0.5% BSA and 0.02% sodium azide.
Storage	Store at -20°C. Avoid repeated freeze-thaw cycles.
Protein Name	Ras association domain-containing protein 7
Gene Name	RASSF7
Cellular localization	Cytoplasm, cytoskeleton, microtubule organizing center, centrosome . Colocalizes with gamma-tubulin.
Purification	The antibody was affinity-purified from rabbit antiserum by affinity-chromatography using epitope-specific immunogen.
Clonality	Polyclonal
Concentration	1 mg/ml
Observed band	
Human Gene ID	8045
Human Swiss-Prot Number	Q02833
Alternative Names	RASSF7; C11orf13; HRC1; Ras association domain-containing protein 7; HRAS1-related cluster protein 1
Background	similarity:Contains 1 Ras-associating domain.,





ELK Biotechnology

Immunohistochemistry analysis of paraffin-embedded human lung carcinoma tissue, using RASSF7 Antibody. The picture on the right is blocked with the synthesized peptide.



+86-27-59760950

ELKbio@ELKbiotech.com

www.elkbiotech.com

23-2, No.388 Gaoxin 2nd Road, Wuhan East Lake Hi-tech Development Zone, Hubei, P.R.C