

BAIAP2L2 rabbit pAb

Cat No.:ES7611

For research use only

Overview

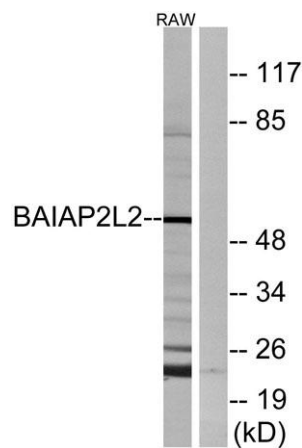
Product Name	BAIAP2L2 rabbit pAb
Host species	Rabbit
Applications	WB;IHC;IF;ELISA
Species Cross-Reactivity	Human;Mouse
Recommended dilutions	Western Blot: 1/500 - 1/2000. Immunohistochemistry: 1/100 - 1/300. ELISA: 1/40000. Not yet tested in other applications.
Immunogen	The antiserum was produced against synthesized peptide derived from human BAIAP2L2. AA range:111-160
Specificity	BAIAP2L2 Polyclonal Antibody detects endogenous levels of BAIAP2L2 protein.
Formulation	Liquid in PBS containing 50% glycerol, 0.5% BSA and 0.02% sodium azide.
Storage	Store at -20°C. Avoid repeated freeze-thaw cycles.
Protein Name	Brain-specific angiogenesis inhibitor 1-associated protein 2-like protein 2
Gene Name	BAIAP2L2
Cellular localization	Cell membrane ; Peripheral membrane protein . Cell junction . Cytoplasmic vesicle membrane . Localizes to RAB13-positive vesicles and to the plasma membrane at intercellular contacts.
Purification	The antibody was affinity-purified from rabbit antiserum by affinity-chromatography using epitope-specific immunogen.
Clonality	Polyclonal
Concentration	1 mg/ml
Observed band	52kD
Human Gene ID	80115
Human Swiss-Prot Number	Q6UXY1
Alternative Names	BAIAP2L2; Brain-specific angiogenesis inhibitor 1-associated protein 2-like protein 2; BAI1-associated protein 2-like protein 2; Planar



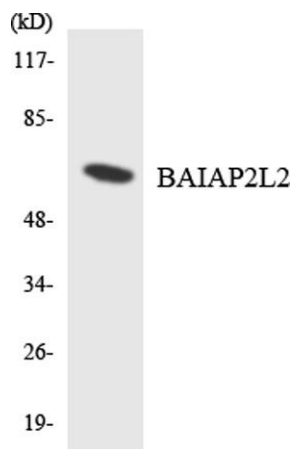
Background

intestinal- and kidney-specific BAR domain protein;
Pinkbar

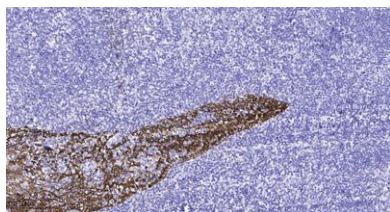
The protein encoded by this gene binds phosphoinositides and promotes the formation of planar or curved membrane structures. The encoded protein is found in RAB13-positive vesicles and at intercellular contacts with the plasma membrane. [provided by RefSeq, Dec 2012],



Western blot analysis of lysates from RAW264.7 cells, using BAIAP2L2 Antibody. The lane on the right is blocked with the synthesized peptide.



Western blot analysis of the lysates from HT-29 cells using BAIAP2L2 antibody.



Immunohistochemical analysis of paraffin-embedded human tonsil. 1, Antibody was diluted at 1:200(4° overnight). 2, Tris-EDTA,pH9.0 was used for antigen retrieval. 3,Secondary antibody was diluted at 1:200(room temperature, 45min).

