

CHSY2 rabbit pAb

Cat No.:ES7583

For research use only

Overview

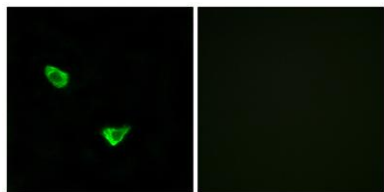
Product Name	CHSY2 rabbit pAb
Host species	Rabbit
Applications	WB;IHC;IF;ELISA
Species	Human;Mouse;Rat
Cross-Reactivity	
Recommended dilutions	Western Blot: 1/500 - 1/2000. Immunohistochemistry: 1/100 - 1/300. Immunofluorescence: 1/200 - 1/1000. ELISA: 1/40000. Not yet tested in other applications.
Immunogen	The antiserum was produced against synthesized peptide derived from human CHSY2. AA range:631-680
Specificity	CHSY2 Polyclonal Antibody detects endogenous levels of CHSY2 protein.
Formula	Liquid in PBS containing 50% glycerol, 0.5% BSA and 0.02% sodium azide.
Storage	Store at -20°C. Avoid repeated freeze-thaw cycles.
Protein Name	Chondroitin sulfate synthase 2
Gene Name	CHPF
Cellular localization	[Isoform 1]: Golgi apparatus, Golgi stack membrane ; Single-pass type II membrane protein . Cytoplasm, cytosol .; [Isoform 3]: Cytoplasm, cytosol . Mitochondrion .; [Isoform 2]: Mitochondrion matrix .
Purification	The antibody was affinity-purified from rabbit antiserum by affinity-chromatography using epitope-specific immunogen.
Clonality	Polyclonal
Concentration	1 mg/ml
Observed band	85kD



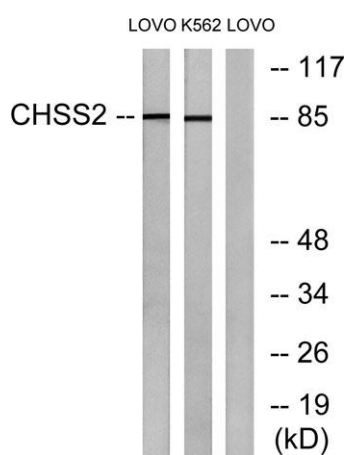
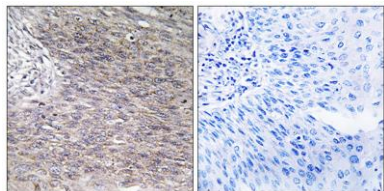


Human	79586
Gene ID	
Human	Q8IZ52
Swiss-Prot	
Number	
Alternative Names	CHPF; CSS2; Chondroitin sulfate synthase 2; Chondroitin glucuronyltransferase 2; Chondroitin-polymerizing factor; ChPF; Glucuronosyl-N-acetylgalactosaminyl-proteoglycan 4-beta-N-acetylgalactosaminyltransferase II; N-acetylgalactosaminyl-pro
Background	catalytic activity:UDP-alpha-D-glucuronate + N-acetyl-beta-D-galactosaminyl-(1->4)-beta-D-glucuronosyl-proteoglycan = UDP + beta-D-glucuronosyl-(1->3)-N-acetyl-beta-D-galactosaminyl-(1->4)-beta-D-glucuronosyl-proteoglycan.,catalytic activity:UDP-N-acetyl-D-galactosamine + beta-D-glucuronosyl-(1->3)-N-acetyl-beta-D-galactosaminyl-proteoglycan = UDP + N-acetyl-beta-D-galactosaminyl-(1->4)-beta-D-glucuronosyl-(1->3)-N-acetyl-beta-D-galactosaminyl-proteoglycan.,cofactor:Divalent cations. Highest activities are measured with manganese. Can also utilize cobalt.,function:Has both beta-1,3-glucuronic acid and beta-1,4-N-acetylgalactosamine transferase activity. Transfers glucuronic acid (GlcUA) from UDP-GlcUA and N-acetylgalactosamine (GalNAc) from UDP-GalNAc to the non-reducing end of the elongating chondroitin polymer.,online information:GlycoGene database,PTM:Phosphorylated upon DNA damage, probably by ATM or ATR.,similarity:Belongs to the chondroitin N-acetylgalactosaminyltransferase family.,subunit:Binds CHSY1.,tissue specificity:Ubiquitous. Highly expressed in pancreas, ovary, brain, heart, skeletal muscle, colon, kidney, liver, stomach, small intestine and placenta.,

Immunofluorescence analysis of MCF7 cells, using CHSY2 Antibody. The picture on the right is blocked with the synthesized peptide.



Immunohistochemistry analysis of paraffin-embedded human cervix carcinoma tissue, using CHSY2 Antibody. The picture on the right is blocked with the synthesized peptide.



Western blot analysis of lysates from LOVO and K562 cells, using CHSY2 Antibody. The lane on the right is blocked with the synthesized peptide.

