



ABHD8 rabbit pAb

Cat No.:ES7581

For research use only

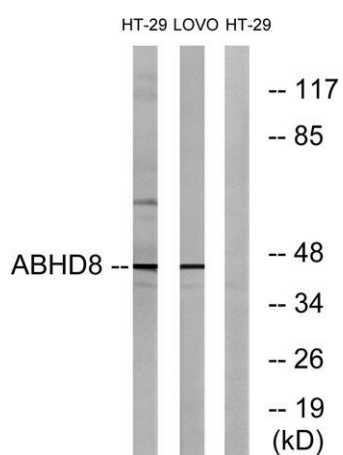
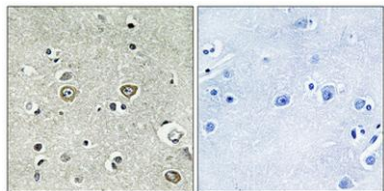
Overview

Product Name	ABHD8 rabbit pAb
Host species	Rabbit
Applications	WB;IHC;IF;ELISA
Species Cross-Reactivity	Human;Mouse
Recommended dilutions	Western Blot: 1/500 - 1/2000. Immunohistochemistry: 1/100 - 1/300. ELISA: 1/40000. Not yet tested in other applications.
Immunogen	The antiserum was produced against synthesized peptide derived from human ABHD8. AA range:291-340
Specificity	ABHD8 Polyclonal Antibody detects endogenous levels of ABHD8 protein.
Formulation	Liquid in PBS containing 50% glycerol, 0.5% BSA and 0.02% sodium azide.
Storage	Store at -20°C. Avoid repeated freeze-thaw cycles.
Protein Name	Abhydrolase domain-containing protein 8
Gene Name	ABHD8
Cellular localization	extracellular exosome,
Purification	The antibody was affinity-purified from rabbit antiserum by affinity-chromatography using epitope-specific immunogen.
Clonality	Polyclonal
Concentration	1 mg/ml
Observed band	45kD
Human Gene ID	79575
Human Swiss-Prot Number	Q96I13
Alternative Names	ABHD8; Abhydrolase domain-containing protein 8
Background	This gene is upstream of, and in a head-to-head orientation with the gene for the mitochondrial ribosomal protein L34. The predicted protein contains alpha/beta hydrolase fold and secretory lipase domains. [provided by RefSeq, Jul 2008],





Immunohistochemical analysis of paraffin-embedded Human brain. Antibody was diluted at 1:100(4° overnight). High-pressure and temperature Tris-EDTA,pH8.0 was used for antigen retrieval. Negative contrl (right) obtained from antibody was pre-absorbed by i



Western blot analysis of lysates from HT-29 and LOVO cells, using ABHD8 Antibody. The lane on the right is blocked with the synthesized peptide.

