



# ZAP-70 (phospho Tyr315) rabbit pAb

Cat No.:ES7531

For research use only

## Overview

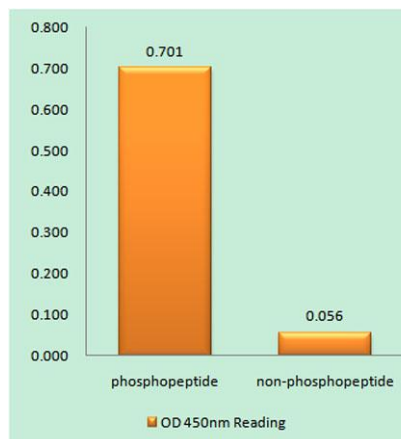
Product Name	ZAP-70 (phospho Tyr315) rabbit pAb
Host species	Rabbit
Applications	WB;IHC;IF;ELISA
Species Cross-Reactivity	Human;Mouse
Recommended dilutions	Western Blot: 1/500 - 1/2000. Immunohistochemistry: 1/100 - 1/300. ELISA: 1/10000. Not yet tested in other applications.
Immunogen	The antiserum was produced against synthesized peptide derived from human ZAP-70 around the phosphorylation site of Tyr315. AA range:281-330
Specificity	Phospho-ZAP-70 (Y315) Polyclonal Antibody detects endogenous levels of ZAP-70 protein only when phosphorylated at Y315.
Formulation	Liquid in PBS containing 50% glycerol, 0.5% BSA and 0.02% sodium azide.
Storage	Store at -20°C. Avoid repeated freeze-thaw cycles.
Protein Name	Tyrosine-protein kinase ZAP-70
Gene Name	ZAP70
Cellular localization	Cytoplasm . Cell membrane ; Peripheral membrane protein . In quiescent T-lymphocytes, it is cytoplasmic. Upon TCR activation, it is recruited at the plasma membrane by interacting with CD247/CD3Z. Colocalizes together with RHOH in the immunological synaps
Purification	The antibody was affinity-purified from rabbit antiserum by affinity-chromatography using epitope-specific immunogen.
Clonality	Polyclonal
Concentration	1 mg/ml
Observed band	60kD
Human Gene ID	7535
Human Swiss-Prot Number	P43403
Alternative Names	ZAP70; SRK; Tyrosine-protein kinase ZAP-70; 70 kDa



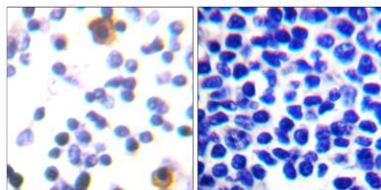
## Background

zeta-chain associated protein; Syk-related tyrosine kinase

This gene encodes an enzyme belonging to the protein tyrosine kinase family, and it plays a role in T-cell development and lymphocyte activation. This enzyme, which is phosphorylated on tyrosine residues upon T-cell antigen receptor (TCR) stimulation, functions in the initial step of TCR-mediated signal transduction in combination with the Src family kinases, Lck and Fyn. This enzyme is also essential for thymocyte development. Mutations in this gene cause selective T-cell defect, a severe combined immunodeficiency disease characterized by a selective absence of CD8-positive T-cells. Two transcript variants that encode different isoforms have been found for this gene. [provided by RefSeq, Jul 2008],

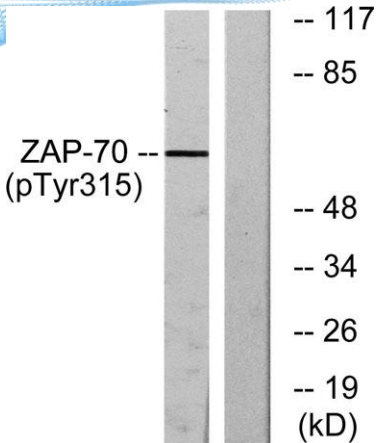


Enzyme-Linked Immunosorbent Assay (Phospho-ELISA) for Immunogen Phosphopeptide (Phospho-left) and Non-Phosphopeptide (Phospho-right), using ZAP-70 (Phospho-Tyr315) Antibody



Immunohistochemistry analysis of paraffin-embedded human lymph node, using ZAP-70 (Phospho-Tyr315) Antibody. The picture on the right is blocked with the phospho peptide.





Western blot analysis of lysates from Jurkat cells treated with  $\text{Ca}^{+}$  40nM 30', using ZAP-70 (Phospho-Tyr315) Antibody. The lane on the right is blocked with the phospho peptide.

