



# COL14A1 rabbit pAb

Cat No.:ES7478

For research use only

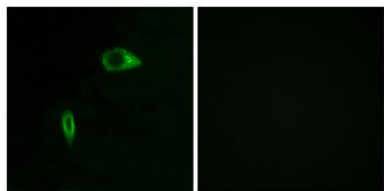
## Overview

Product Name	COL14A1 rabbit pAb
Host species	Rabbit
Applications	IHC;IF;ELISA
Species Cross-Reactivity	Human;Mouse
Recommended dilutions	Immunohistochemistry: 1/100 - 1/300. Immunofluorescence: 1/200 - 1/1000. ELISA: 1/40000. Not yet tested in other applications.
Immunogen	The antiserum was produced against synthesized peptide derived from human N-terminal Collagen XIV alpha1. AA range:71-120
Specificity	COL14A1 Polyclonal Antibody detects endogenous levels of COL14A1 protein.
Formulation	Liquid in PBS containing 50% glycerol, 0.5% BSA and 0.02% sodium azide.
Storage	Store at -20°C. Avoid repeated freeze-thaw cycles.
Protein Name	Collagen alpha-1(XIV) chain
Gene Name	COL14A1
Cellular localization	Secreted, extracellular space, extracellular matrix .
Purification	The antibody was affinity-purified from rabbit antiserum by affinity-chromatography using epitope-specific immunogen.
Clonality	Polyclonal
Concentration	1 mg/ml
Observed band	
Human Gene ID	7373
Human Swiss-Prot Number	Q05707
Alternative Names	COL14A1; UND; Collagen alpha-1(XIV) chain; Undulin
Background	This gene encodes the alpha chain of type XIV collagen, a member of the FACIT (fibril-associated collagens with interrupted triple helices) collagen family. Type XIV collagen interacts with the fibril surface and is involved in the regulation of



fibrillogenesis. [provided by RefSeq, Jan 2013],

Immunofluorescence analysis of HeLa cells, using Collagen XIV alpha1 Antibody. The picture on the right is blocked with the synthesized peptide.



Immunohistochemistry analysis of paraffin-embedded human heart tissue, using Collagen XIV alpha1 Antibody. The picture on the right is blocked with the synthesized peptide.

