



# TSSC1 rabbit pAb

Cat No.:ES7454

For research use only

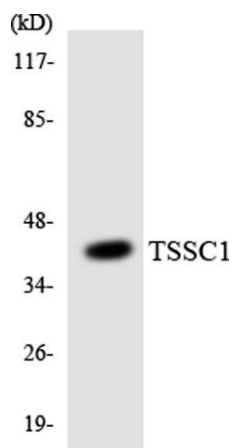
## Overview

Product Name	TSSC1 rabbit pAb
Host species	Rabbit
Applications	WB;ELISA
Species Cross-Reactivity	Human;Mouse;Rat;Monkey
Recommended dilutions	Western Blot: 1/500 - 1/2000. ELISA: 1/10000. Not yet tested in other applications.
Immunogen	The antiserum was produced against synthesized peptide derived from human TSSC1. AA range:291-340
Specificity	TSSC1 Polyclonal Antibody detects endogenous levels of TSSC1 protein.
Formulation	Liquid in PBS containing 50% glycerol, 0.5% BSA and 0.02% sodium azide.
Storage	Store at -20°C. Avoid repeated freeze-thaw cycles.
Protein Name	Protein TSSC1
Gene Name	TSSC1
Cellular localization	Golgi apparatus, trans-Golgi network .
Purification	The antibody was affinity-purified from rabbit antiserum by affinity-chromatography using epitope-specific immunogen.
Clonality	Polyclonal
Concentration	1 mg/ml
Observed band	48kD
Human Gene ID	7260
Human Swiss-Prot Number	Q53HC9
Alternative Names	TSSC1; Protein TSSC1; Tumor-suppressing STF cDNA 1 protein; Tumor-suppressing subchromosomal transferable fragment candidate gene 1 protein
Background	This gene has been reported in PMID 9403053 as one of several tumor-suppressing subtransferable fragments located in the imprinted gene domain of 11p15.5, an important tumor-suppressor gene region. Alterations in this region have been





associated with the Beckwith-Wiedemann syndrome, Wilms tumor, rhabdomyosarcoma, adrenocortical carcinoma, and lung, ovarian, and breast cancer. Alignment of this gene to genomic sequence data suggests that this gene resides on chromosome 2 rather than chromosome 11. [provided by RefSeq, Dec 2008],



Western blot analysis of the lysates from HepG2 cells using TSSC1 antibody.

