



# Thymidine Kinase rabbit pAb

Cat No.:ES7398

For research use only

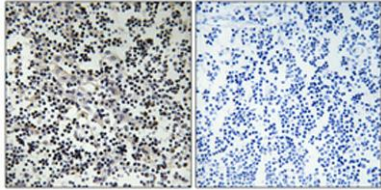
## Overview

|                          |  |
|--------------------------|--|
| Product Name             | Thymidine Kinase rabbit pAb  |
| Host species             | Rabbit   |
| Applications             | WB;IHC;IF;ELISA  |
| Species Cross-Reactivity | Human;Mouse;Rat  |
| Recommended dilutions    | Western Blot: 1/500 - 1/2000.<br>Immunohistochemistry: 1/100 - 1/300.<br>Immunofluorescence: 1/200 - 1/1000. ELISA:<br>1/5000. Not yet tested in other applications.   |
| Immunogen                | The antiserum was produced against synthesized peptide derived from human TK. AA range:1-50  |
| Specificity              | Thymidine Kinase Polyclonal Antibody detects endogenous levels of Thymidine Kinase protein.  |
| Formulation              | Liquid in PBS containing 50% glycerol, 0.5% BSA and 0.02% sodium azide.  |
| Storage                  | Store at -20°C. Avoid repeated freeze-thaw cycles.   |
| Protein Name             | Thymidine kinase cytosolic   |
| Gene Name                | TK1  |
| Cellular localization    | Cytoplasm.   |
| Purification             | The antibody was affinity-purified from rabbit antiserum by affinity-chromatography using epitope-specific immunogen.  |
| Clonality                | Polyclonal   |
| Concentration            | 1 mg/ml  |
| Observed band            | 25kD   |
| Human Gene ID            | 7083   |
| Human Swiss-Prot Number  | P04183   |
| Alternative Names        | TK1; Thymidine kinase; cytosolic   |
| Background               | catalytic activity:ATP + thymidine = ADP + thymidine 5'-phosphate.,miscellaneous:Two forms have been identified in animal cells, one in cytosol and one in mitochondria. Activity of the cytosolic enzyme is high in proliferating cells and peaks during the S-phase of the cell cycle; it is very low in resting |

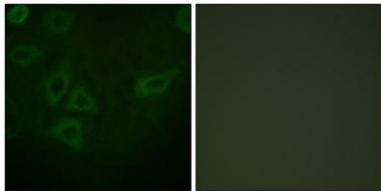


cells.,PTM:Phosphorylated on Ser-13 in mitosis.,similarity:Belongs to the thymidine kinase family.,

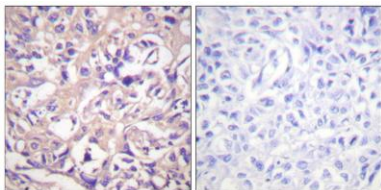
Immunohistochemical analysis of paraffin-embedded Human lung cancer. Antibody was diluted at 1:100(4° overnight). High-pressure and temperature Tris-EDTA,pH8.0 was used for antigen retrieval. Negative contrl (right) obtained from antibody was pre-absorbe



Immunofluorescence analysis of HepG2 cells, using TK Antibody. The picture on the right is blocked with the synthesized peptide.

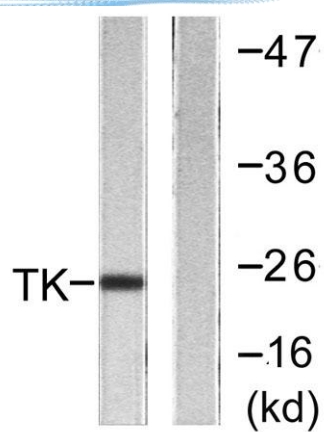


Immunohistochemistry analysis of paraffin-embedded human breast carcinoma tissue, using TK Antibody. The picture on the right is blocked with the synthesized peptide.





**ELK Biotechnology**



Western blot analysis of lysates from COLO205 cells, using TK Antibody. The lane on the right is blocked with the synthesized peptide.



+86-27-59760950

[ELKbio@ELKbiotech.com](mailto:ELKbio@ELKbiotech.com)

[www.elkbiotech.com](http://www.elkbiotech.com)

23-2, No.388 Gaoxin 2nd Road,Wuhan East Lake Hi-tech Development Zone, Hubei , P.R.C