



TR α rabbit pAb

Cat No.:ES7389

For research use only

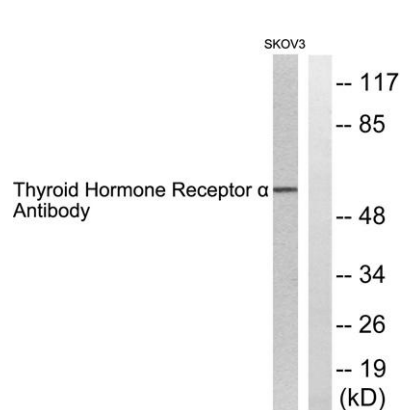
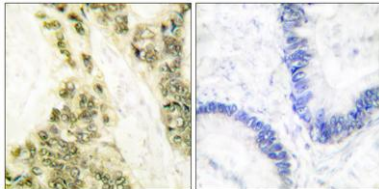
Overview

Product Name	TR α rabbit pAb
Host species	Rabbit
Applications	WB;IHC;IF;ELISA
Species Cross-Reactivity	Human;Mouse;Rat
Recommended dilutions	Western Blot: 1/500 - 1/2000. Immunohistochemistry: 1/100 - 1/300. ELISA: 1/10000. Not yet tested in other applications.
Immunogen	The antiserum was produced against synthesized peptide derived from human Thyroid Hormone Receptor alpha. AA range:10-59
Specificity	TR α Polyclonal Antibody detects endogenous levels of TR α protein.
Formulation	Liquid in PBS containing 50% glycerol, 0.5% BSA and 0.02% sodium azide.
Storage	Store at -20°C. Avoid repeated freeze-thaw cycles.
Protein Name	Thyroid hormone receptor alpha
Gene Name	THRA
Cellular localization	Nucleus.; [Isoform Alpha-2]: Cytoplasm . Nucleus . When overexpressed found in the cytoplasm where it colocalizes with TACC1. .
Purification	The antibody was affinity-purified from rabbit antiserum by affinity-chromatography using epitope-specific immunogen.
Clonality	Polyclonal
Concentration	1 mg/ml
Observed band	55kD
Human Gene ID	7067
Human Swiss-Prot Number	P10827
Alternative Names	THRA; EAR7; ERBA1; NR1A1; THRA1; THRA2; Thyroid hormone receptor alpha; Nuclear receptor subfamily 1 group A member 1; V-erbA-related protein 7; EAR-7; c-erbA-1; c-erbA-alpha
Background	The protein encoded by this gene is a nuclear



hormone receptor for triiodothyronine. It is one of the several receptors for thyroid hormone, and has been shown to mediate the biological activities of thyroid hormone. Knockout studies in mice suggest that the different receptors, while having certain extent of redundancy, may mediate different functions of thyroid hormone. Alternatively spliced transcript variants encoding distinct isoforms have been reported. [provided by RefSeq, Jul 2008],

Immunohistochemistry analysis of paraffin-embedded human colon carcinoma tissue, using Thyroid Hormone Receptor alpha Antibody. The picture on the right is blocked with the synthesized peptide.



Western blot analysis of lysates from SKOV3 cells, using Thyroid Hormone Receptor alpha Antibody. The lane on the right is blocked with the synthesized peptide.

