

Spectrin β II rabbit pAb

Cat No.:ES7262

For research use only

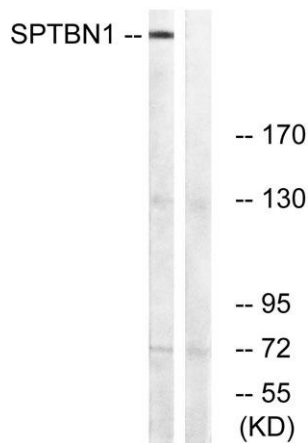
Overview

Product Name	Spectrin β II rabbit pAb
Host species	Rabbit
Applications	WB;IHC;IF;ELISA
Species Cross-Reactivity	Human;Mouse;Rat
Recommended dilutions	Western Blot: 1/500 - 1/2000. Immunohistochemistry: 1/100 - 1/300. ELISA: 1/10000. Not yet tested in other applications.
Immunogen	The antiserum was produced against synthesized peptide derived from human SPTBN1. AA range:651-700
Specificity	Spectrin β II Polyclonal Antibody detects endogenous levels of Spectrin β II protein.
Formulation	Liquid in PBS containing 50% glycerol, 0.5% BSA and 0.02% sodium azide.
Storage	Store at -20°C. Avoid repeated freeze-thaw cycles.
Protein Name	Spectrin beta chain non-erythrocytic 1
Gene Name	SPTBN1
Cellular localization	Cytoplasm, cytoskeleton . Cytoplasm, myofibril, sarcomere, M line . Colocalizes with ANK2 in a distinct intracellular compartment of neonatal cardiomyocytes. .; [Isoform 2]: Cell membrane ; Peripheral membrane protein ; Cytoplasmic side .
Purification	The antibody was affinity-purified from rabbit antiserum by affinity-chromatography using epitope-specific immunogen.
Clonality	Polyclonal
Concentration	1 mg/ml
Observed band	275kD
Human Gene ID	6711
Human Swiss-Prot Number	Q01082
Alternative Names	SPTBN1; SPTB2; Spectrin beta chain; non-erythrocytic 1; Beta-II spectrin; Fodrin beta chain; Spectrin, non-erythroid beta chain 1

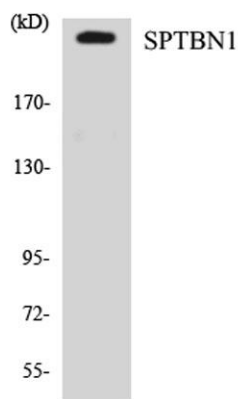


Background

Spectrin is an actin crosslinking and molecular scaffold protein that links the plasma membrane to the actin cytoskeleton, and functions in the determination of cell shape, arrangement of transmembrane proteins, and organization of organelles. It is composed of two antiparallel dimers of alpha- and beta- subunits. This gene is one member of a family of beta-spectrin genes. The encoded protein contains an N-terminal actin-binding domain, and 17 spectrin repeats which are involved in dimer formation. Multiple transcript variants encoding different isoforms have been found for this gene. [provided by RefSeq, Jul 2008],



Western blot analysis of lysates from COLO cells, using SPTBN1 Antibody. The lane on the right is blocked with the synthesized peptide.

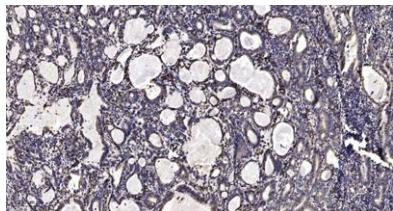


Western blot analysis of the lysates from Jurkat cells using SPTBN1 antibody.





ELK Biotechnology



Immunohistochemical analysis of paraffin-embedded human Gastric adenocarcinoma. 1, Antibody was diluted at 1:200(4° overnight). 2, Tris-EDTA,pH9.0 was used for antigen retrieval. 3,Secondary antibody was diluted at 1:200(room temperature, 45min).



+86-27-59760950

ELKbio@ELKbiotech.com

www.elkbiotech.com

23-2, No.388 Gaoxin 2nd Road,Wuhan East Lake Hi-tech Development Zone, Hubei , P.R.C